

↳ Nase

= 119 = ...

Wirbelsäule seitlich

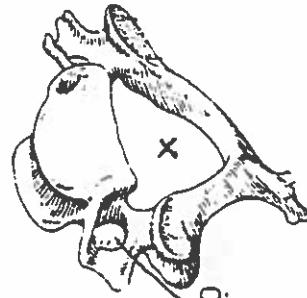
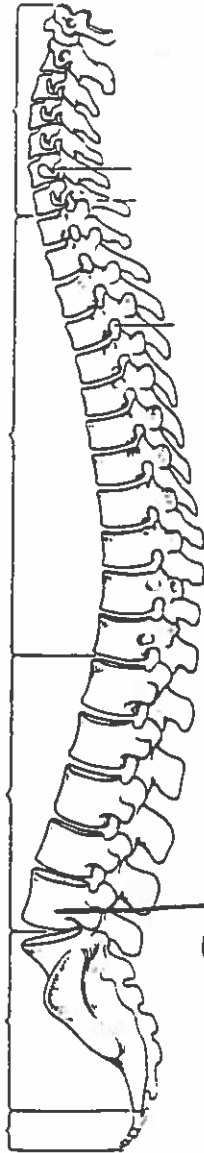
Halswirbel=
säule

Brustwirbel=
säule

Lendenwirbel=
säule

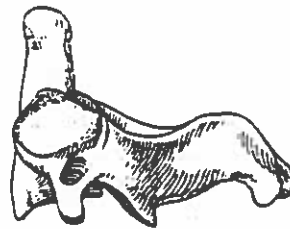
Kreuzbein

Steißbein

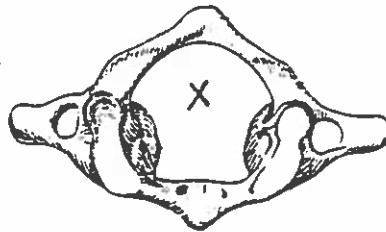


X = Wirbelloch

Halswirbel
Ari verläuft d.
Wirbelschleppaden



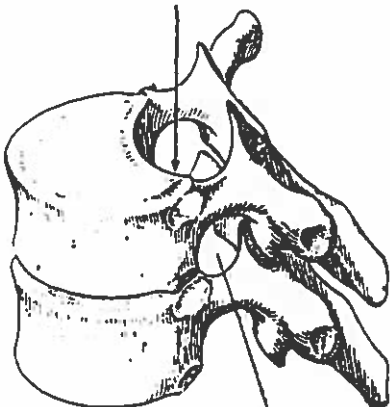
2. Halswirbel



1. Halswirbel

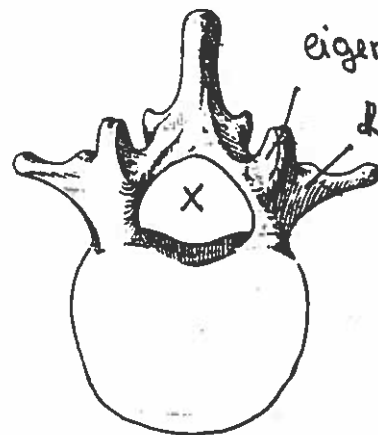
Keil förmige
Wirbelkörper

Wirbelkanal



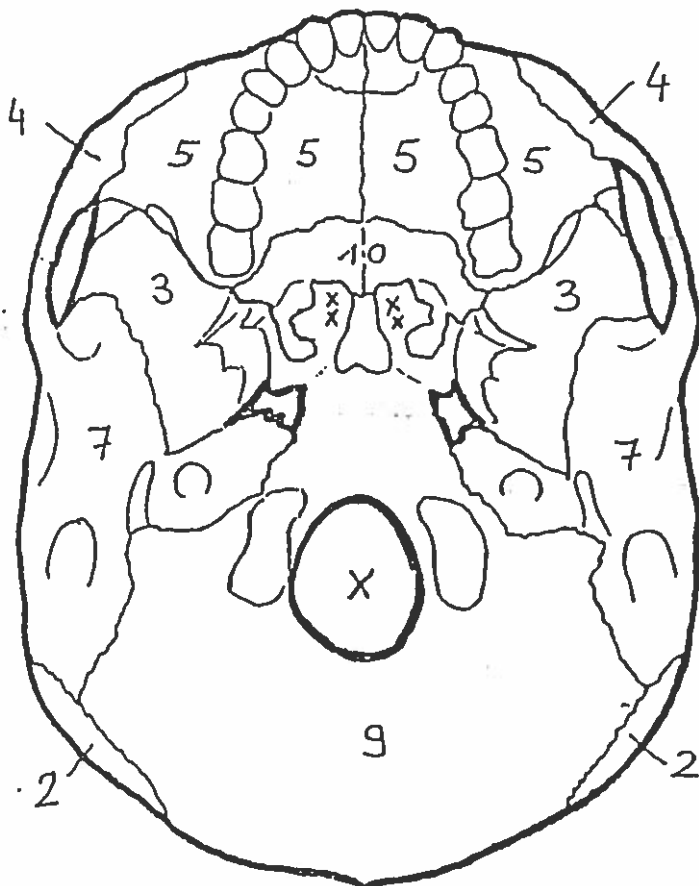
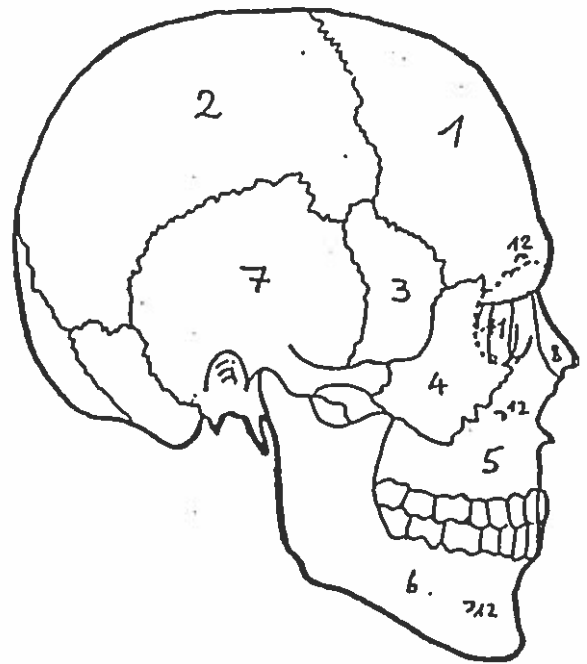
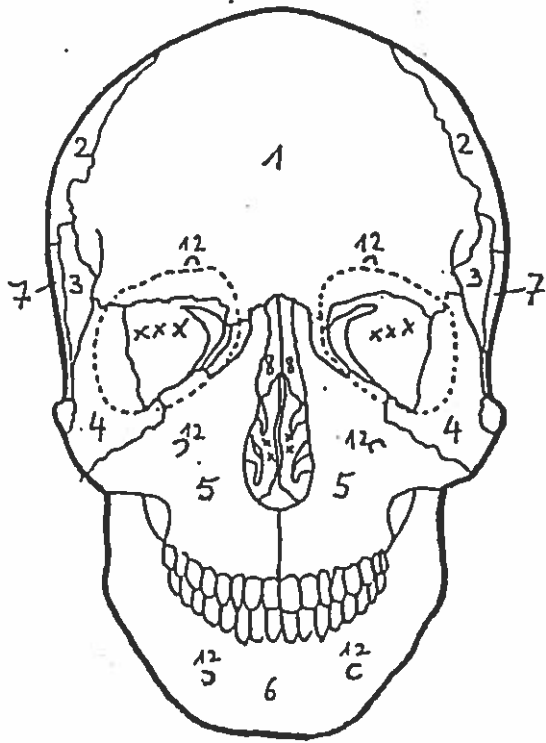
Erustwirbel

Zwischenwirbelloch:
Austritsstelle für
segmentalen Nerven

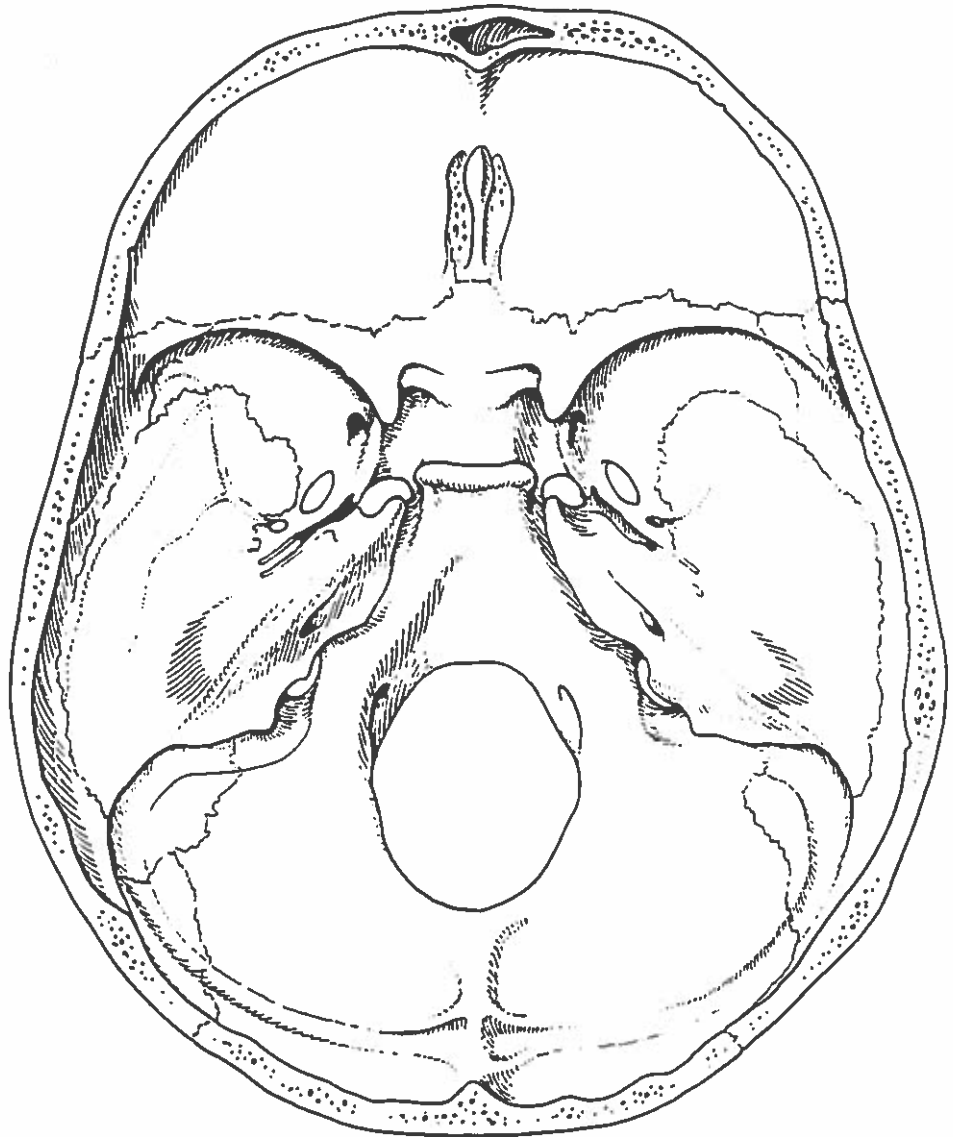


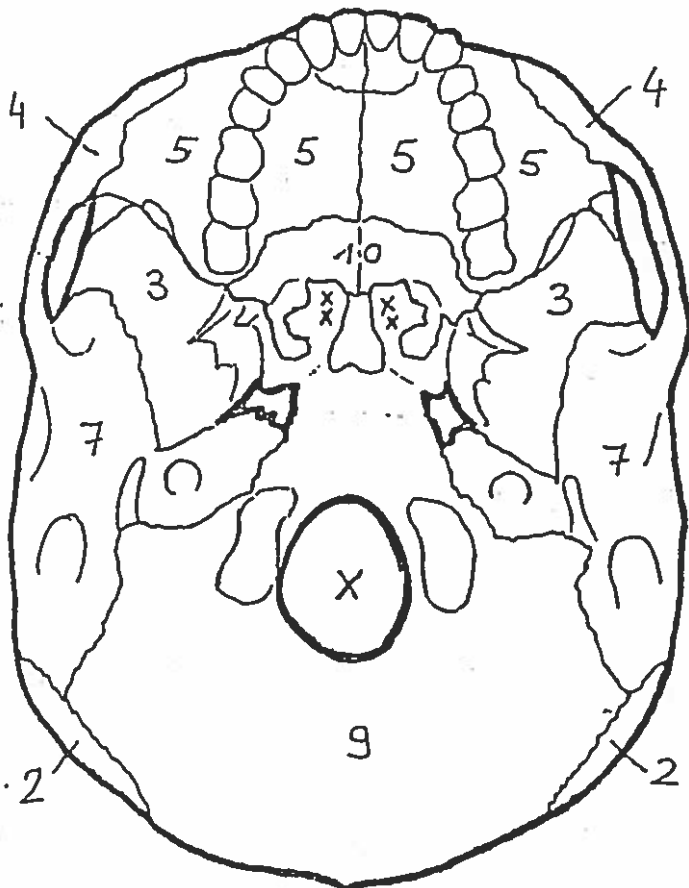
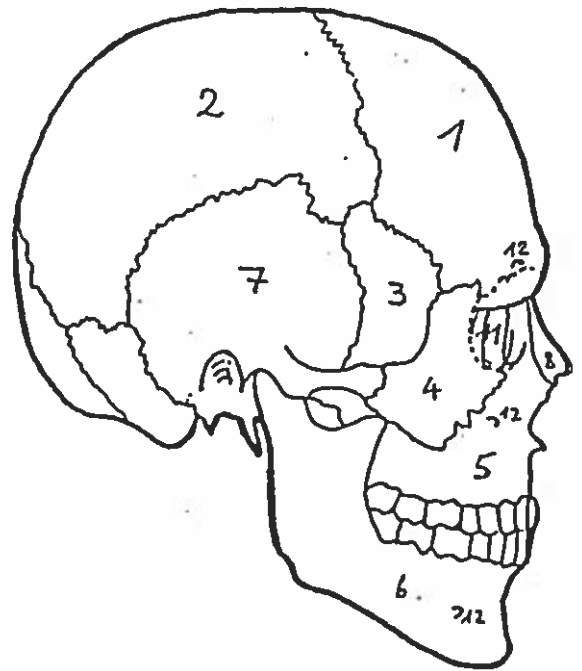
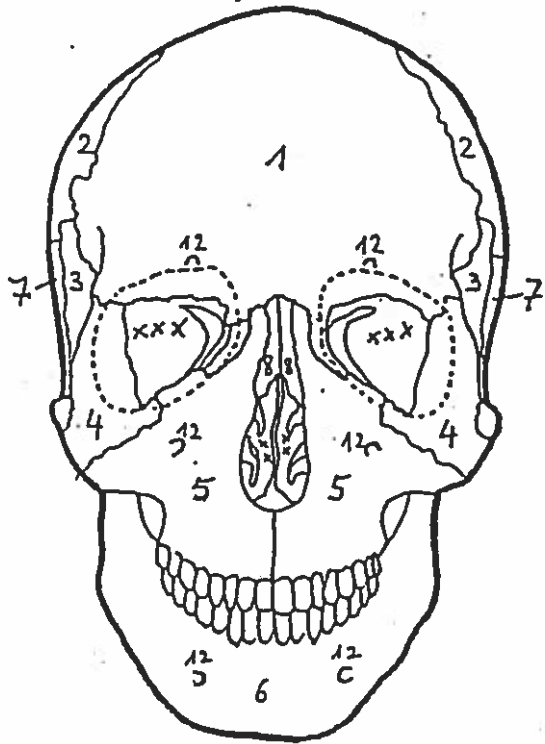
eigentliche Querfort
zwischen gebildet
Rippfortsatz

Lendenwirbel

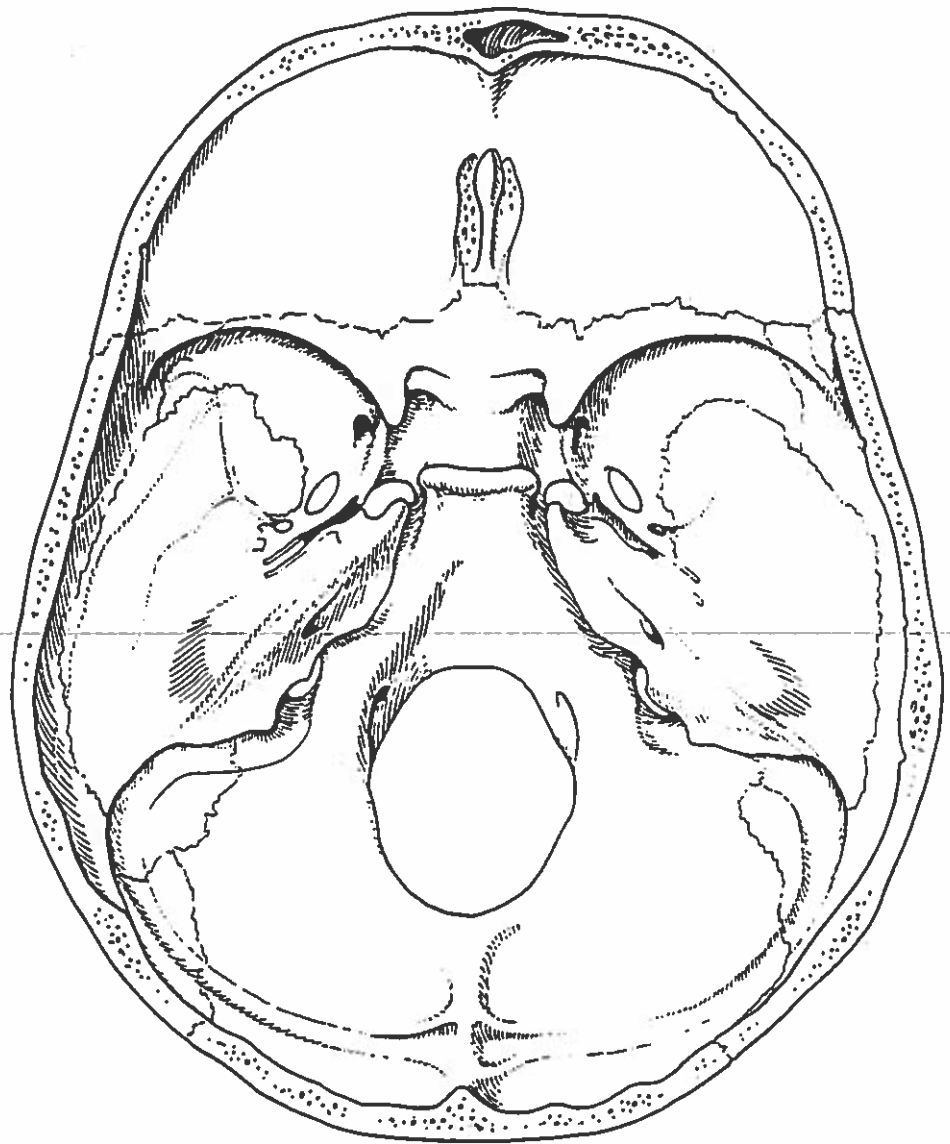


- 1 Stirnbein
- 2 Scheitelbein
- 3 Keilbein
- 4 Jochbein
- 5 Oberkiefer
- 6 Unterkiefer
- 7 Schläfenbein
- 8 Nasenbein
- 9 Hinterhauptsbein
- 10 Gaumenbein
- 11 Tränenbein
- 12 Nervenaustrittsstellen
- x Großes Hinterhauptsloch
- xx Nasenhöhle
- xxx Augenhöhle





- 1 Stirnbein
- 2 Scheitelbein
- 3 Keilbein
- 4 Jochbein
- 5 Oberkiefer
- 6 Unterkiefer
- 7 Schläfenbein
- 8 Nasenbein
- 9 Hinterhauptsbein
- 10 Gaumenbein
- 11 Tränenbein
- 12 Nervenaustrittsstellen
- x Großes Hinterhauptsloch
- xx Nasenhöhle
- xxx Augenhöhle



Knochenpunkte

Gesichtschädel/Schädel

Foramen supraorbitale
Foramen infraorbitale
Foramen mentale
Angulus mandibulae
Protuberantia mentalis
Arcus zygomaticus
Tuberculum articulare
Processus condylaris
Processus mastoideus

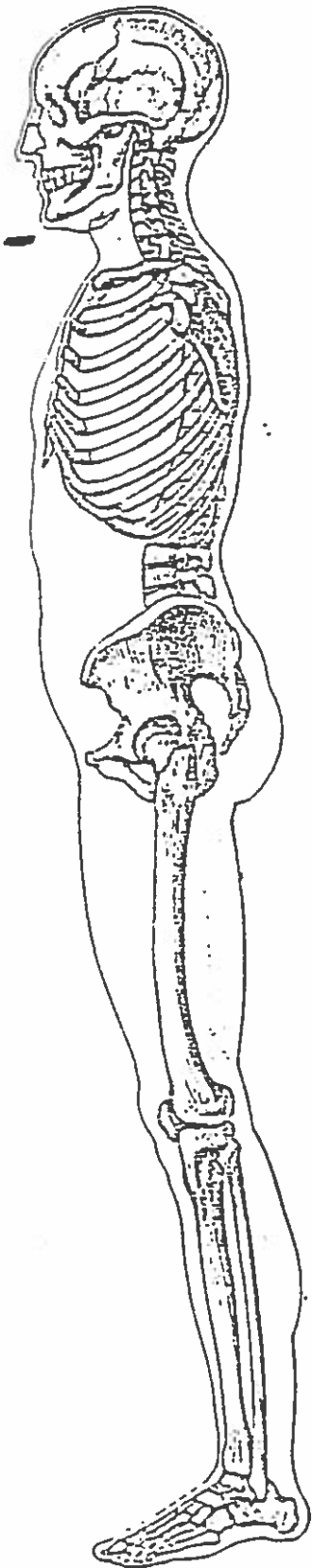
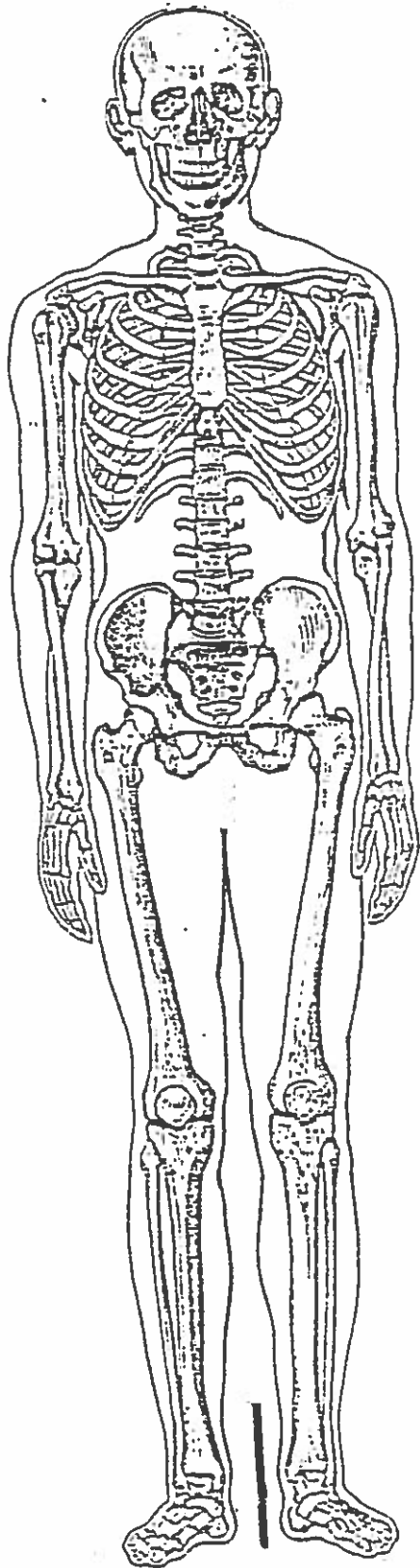
Obere Extremitäten

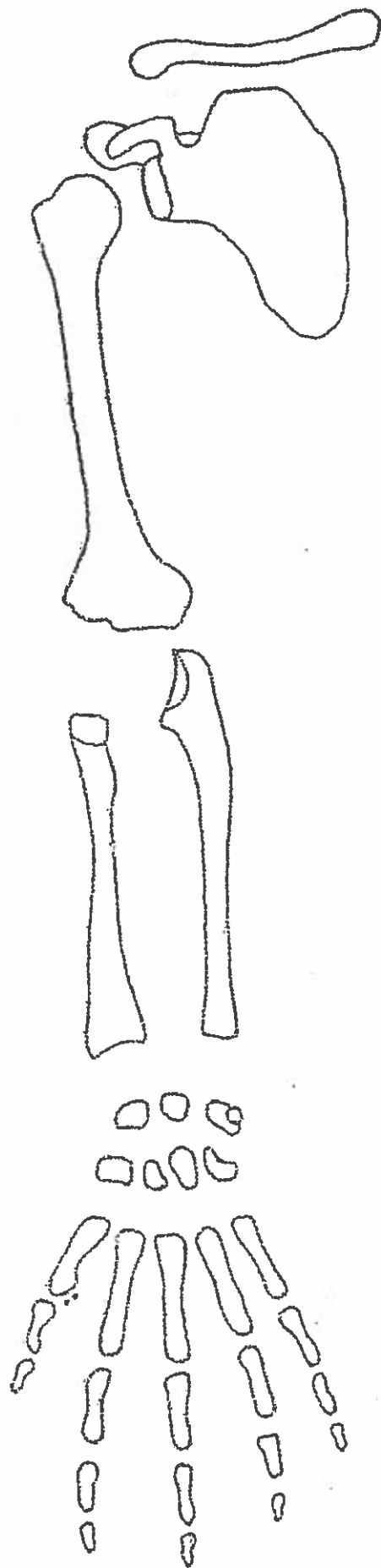
Clavicula
Manubrium sterni
Incisura jugularis
Incisura clavicularis
Costa secunda
Corpus sterni
Processus xiphoideus
Processi spinosi
Vertebra prominens
Angulus superior
Angulus inferior
Scapula
Spina scapulae
Arcomion
Arcus costalis
Angulus infrasternalis
Epicondylus medialis humeri
Epicondylus lateralis humeri
Processus styloideus

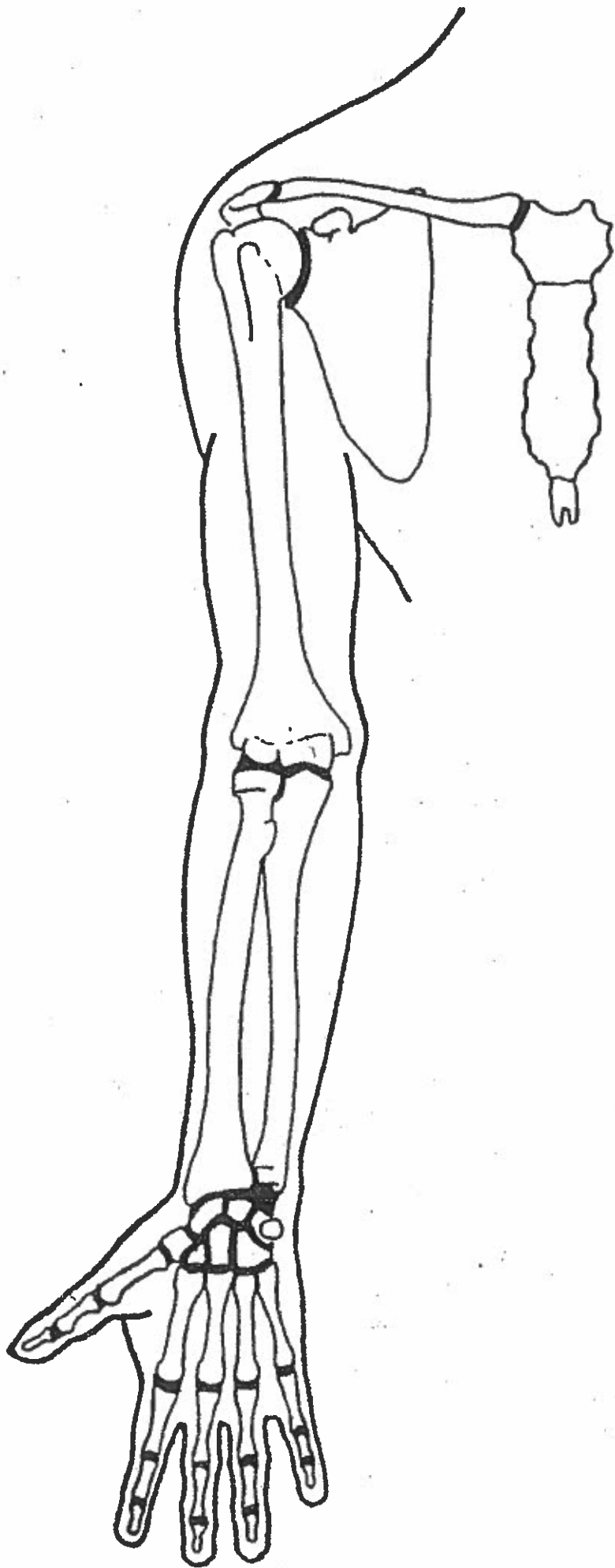
Untere Extremitäten

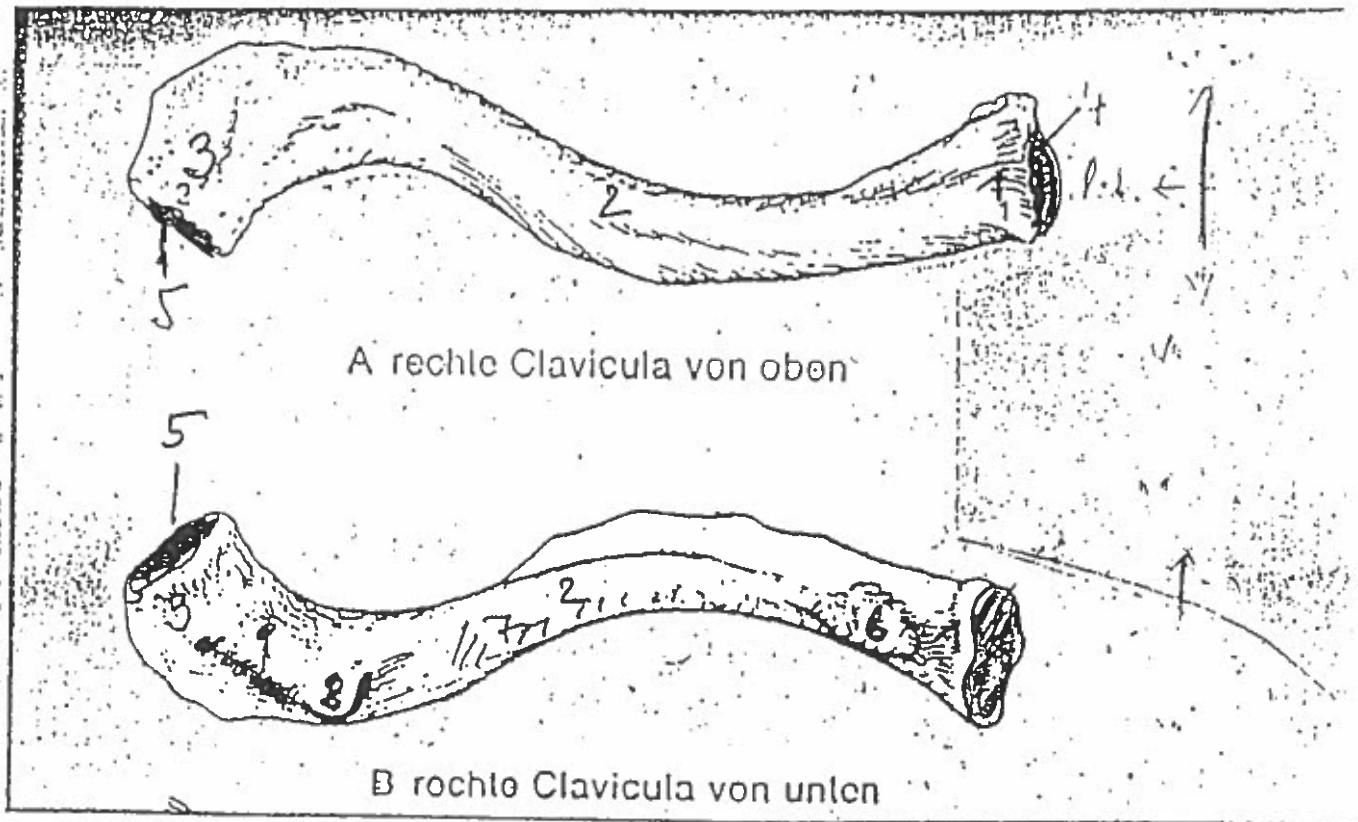
Crista iliaca
Spina iliaca anterior superior
Spina iliaca anterior inferior
Spina iliaca posterior superior
Spina iliaca posterior inferior
Tuberculum pubicum
Symphysis pubica
Crista pubica
Trochanter major
Trochanter minor
Epicondylus lateralis tibiae
Epicondylus medialis tibiae
Tuberositas tibiae
Tuberculum adductorium
Caput femoris
Spina ischiadica

Tuber calcanei
Malleolus medialis
Malleolus lateralis
Tuber ischiadicum
Caput tibiae
Caput fibulae
Eminentia iliopubica

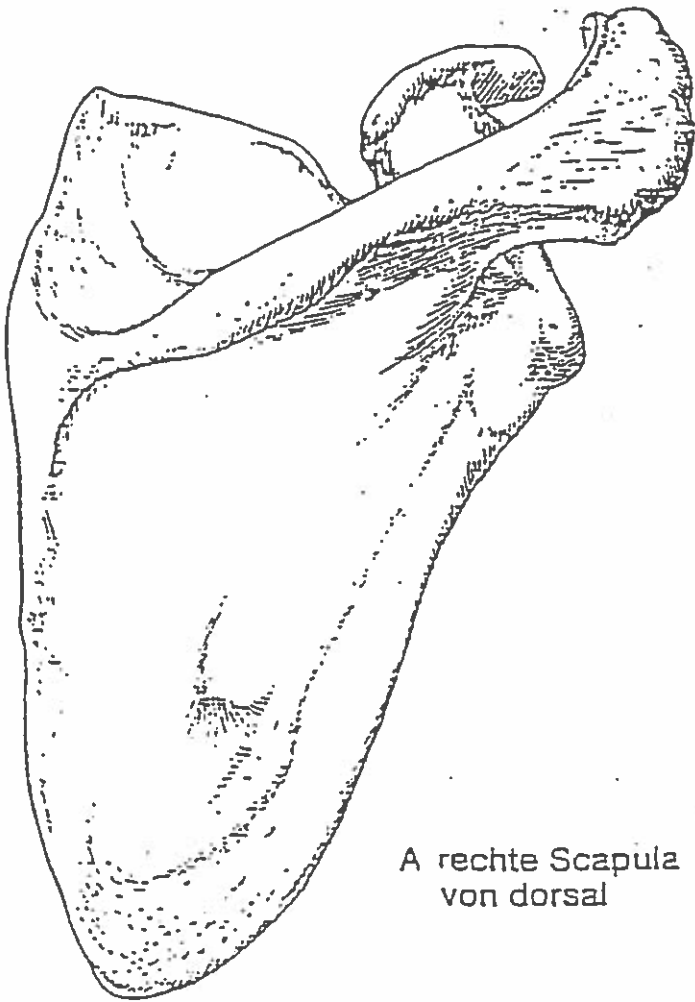




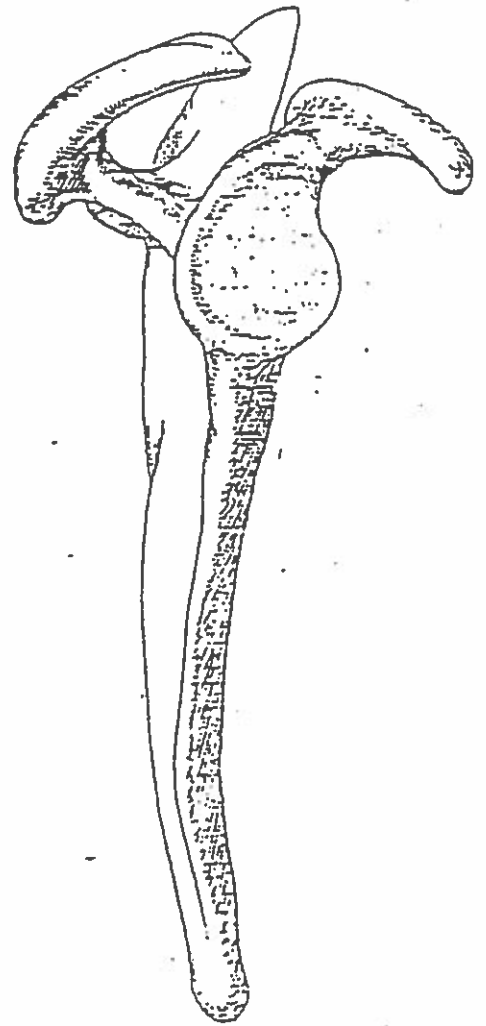




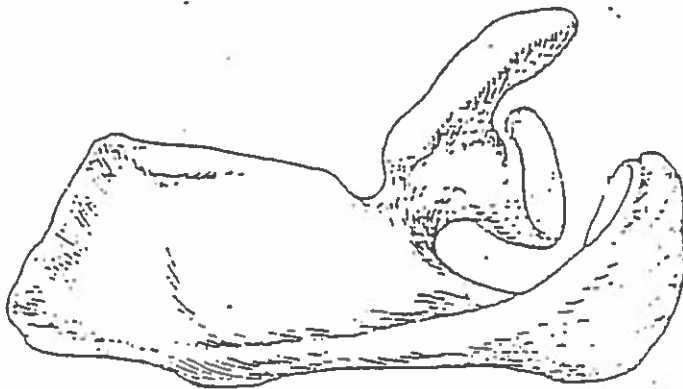
Dr. med. univ.
K. H. KÜNZEL
 Institut für Anatomie Histologie und Embryologie
 der Universität Innsbruck
 A-6010 Innsbruck, Müllerstraße 59



A rechte Scapula
von dorsal

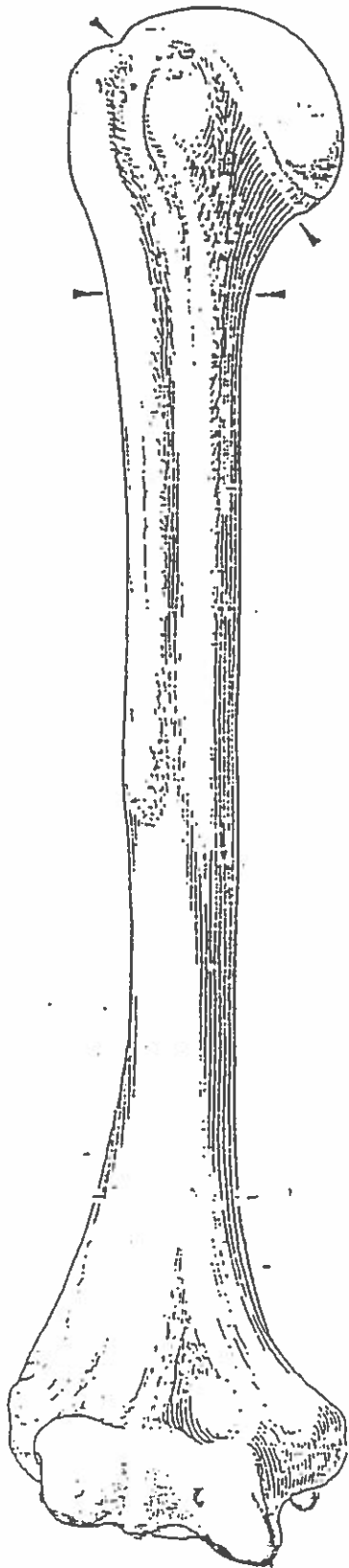


B rechte Scapula von latera

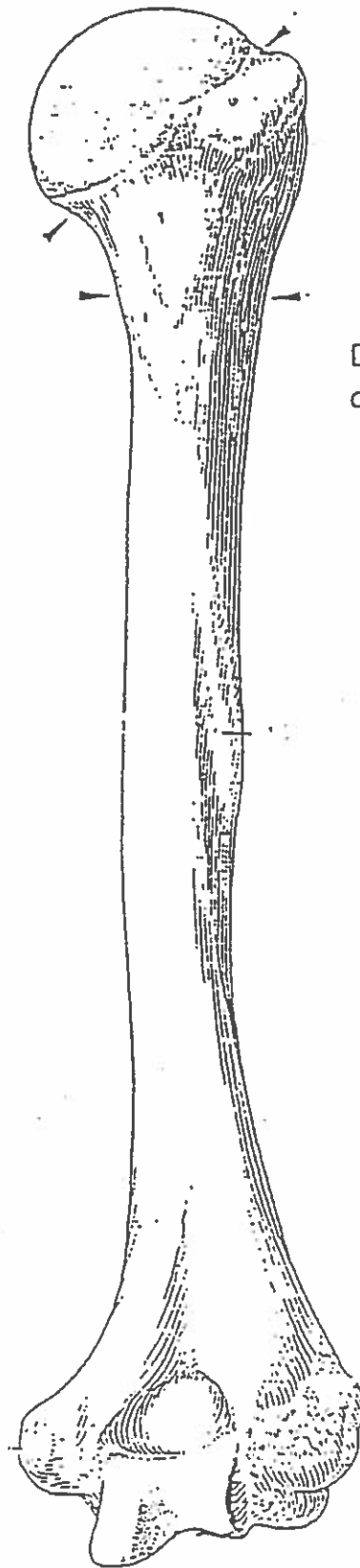


C rechte Scapula von oben

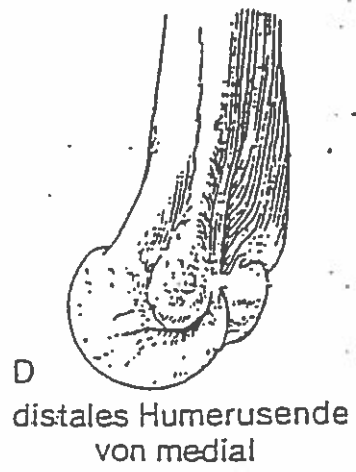
Dr. med. univ.
K. H. KÜNZEL
Institut für Anatomie, Histologie und Embryologie
der Universität Innsbruck
A-6010 Innsbruck, Müllerstraße 59



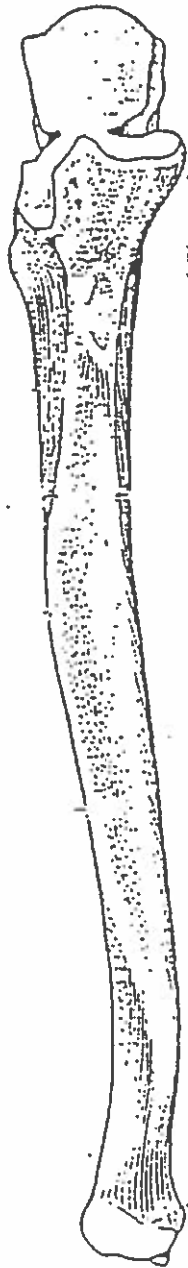
A rechter Humerus
von vorne



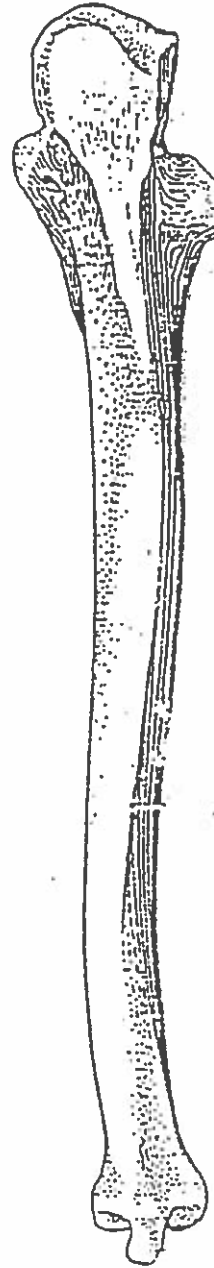
B rechter Humerus
von hinten



D
distales Humerusende
von medial

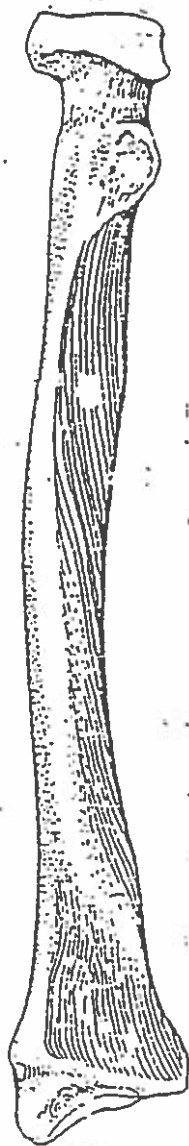


F Ulna von vorne

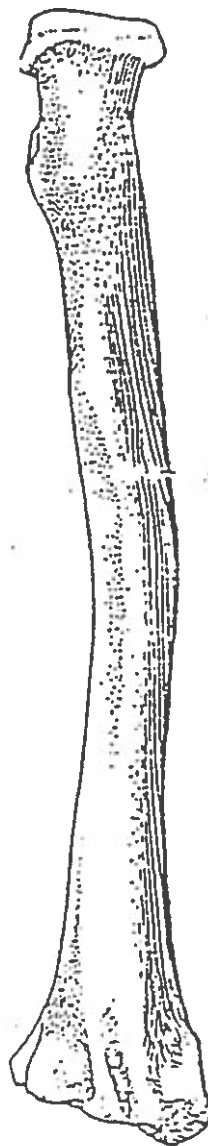


G Ulna von hinten

Dr. med. univ.
K. H. KÜNZEL
Institut für Anatomie, Histologie und Embryologie
der Universität Innsbruck
A-6010 Innsbruck, Müllerstraße 59

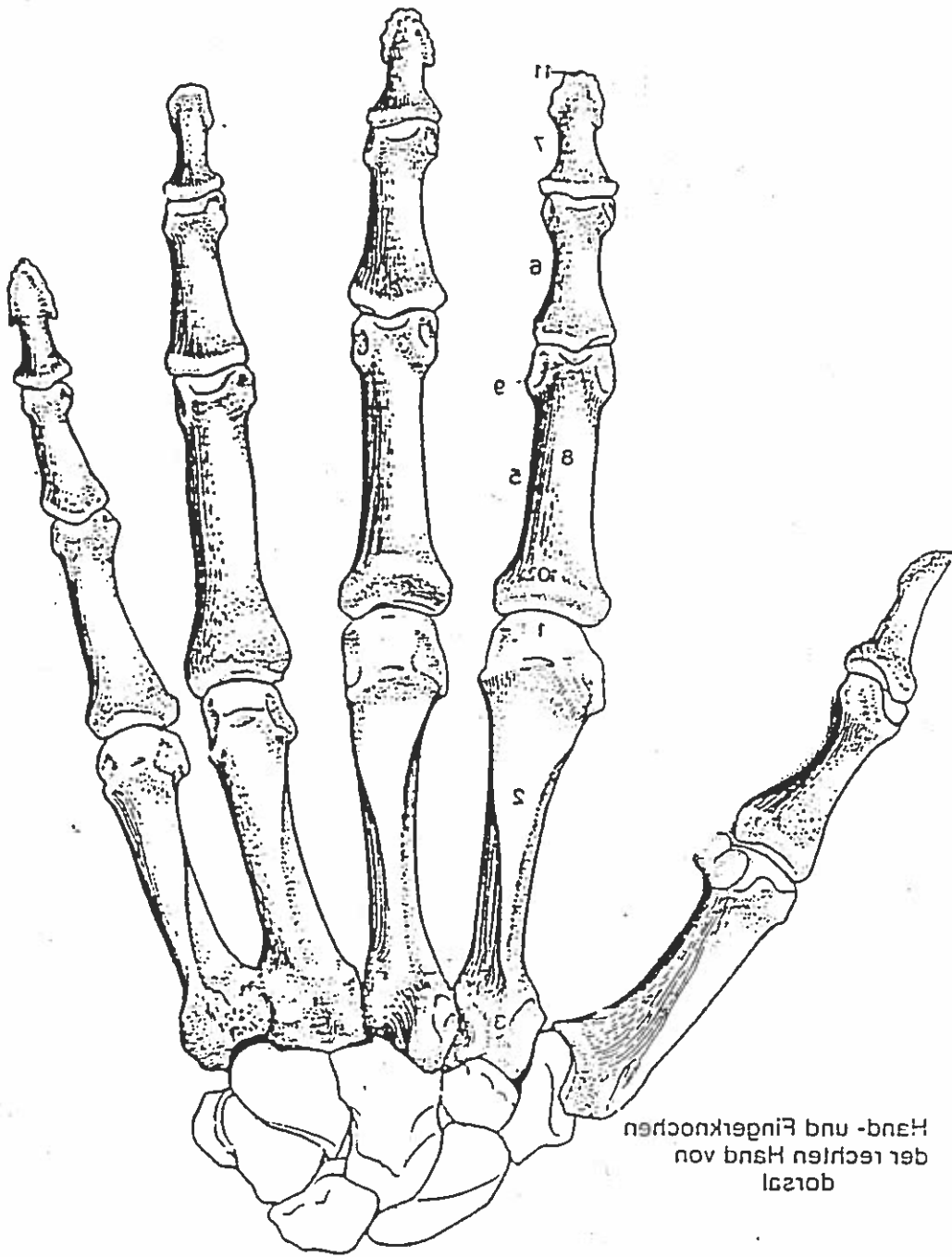


A Radius
von vorne



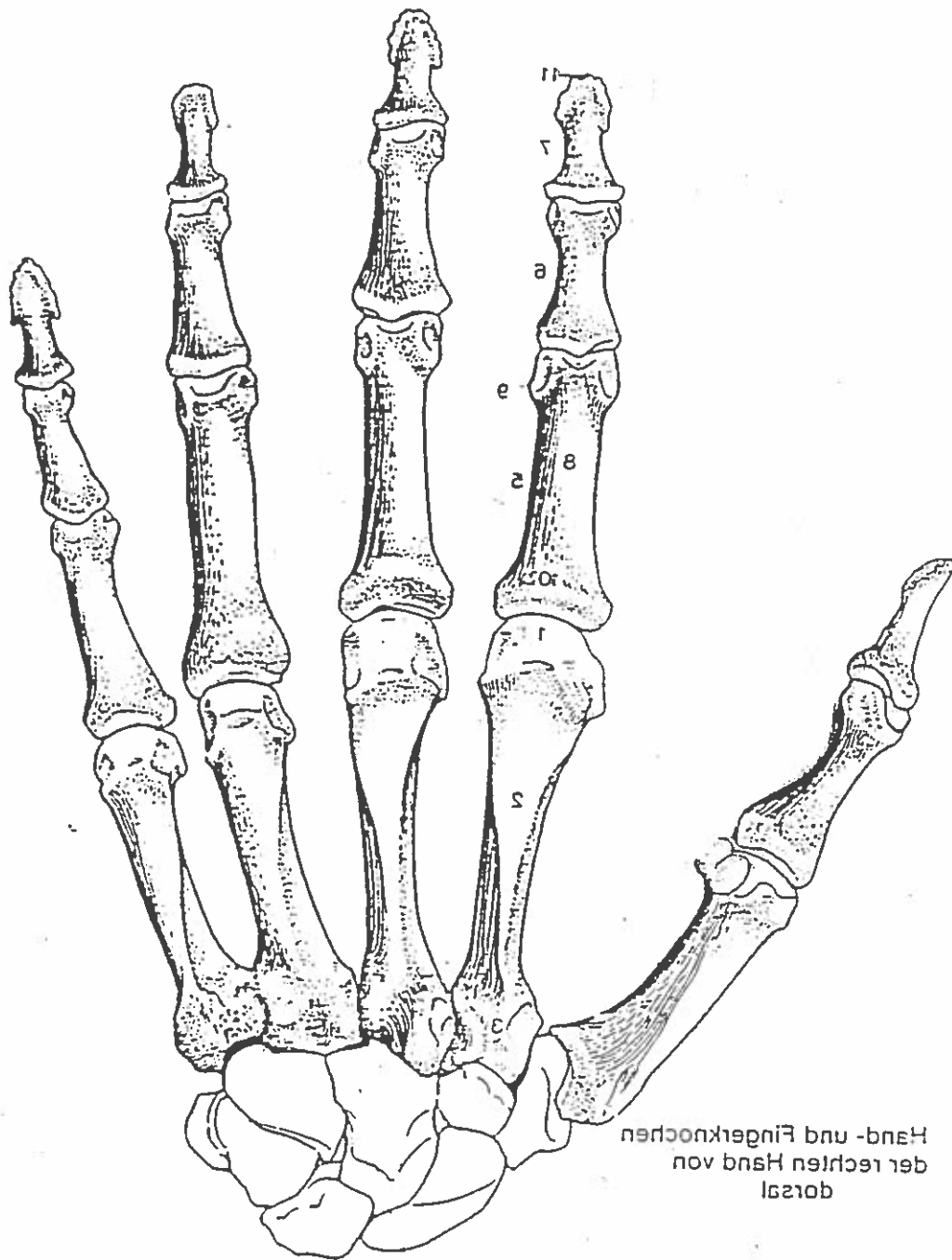
B Radius
von hinten

Dr. med. univ.
K. H. KÜNZEL
Institut für Anatomie, Histologie und Embryologie
der Universität Innsbruck
A-6010 Innsbruck, Müllerstraße 59



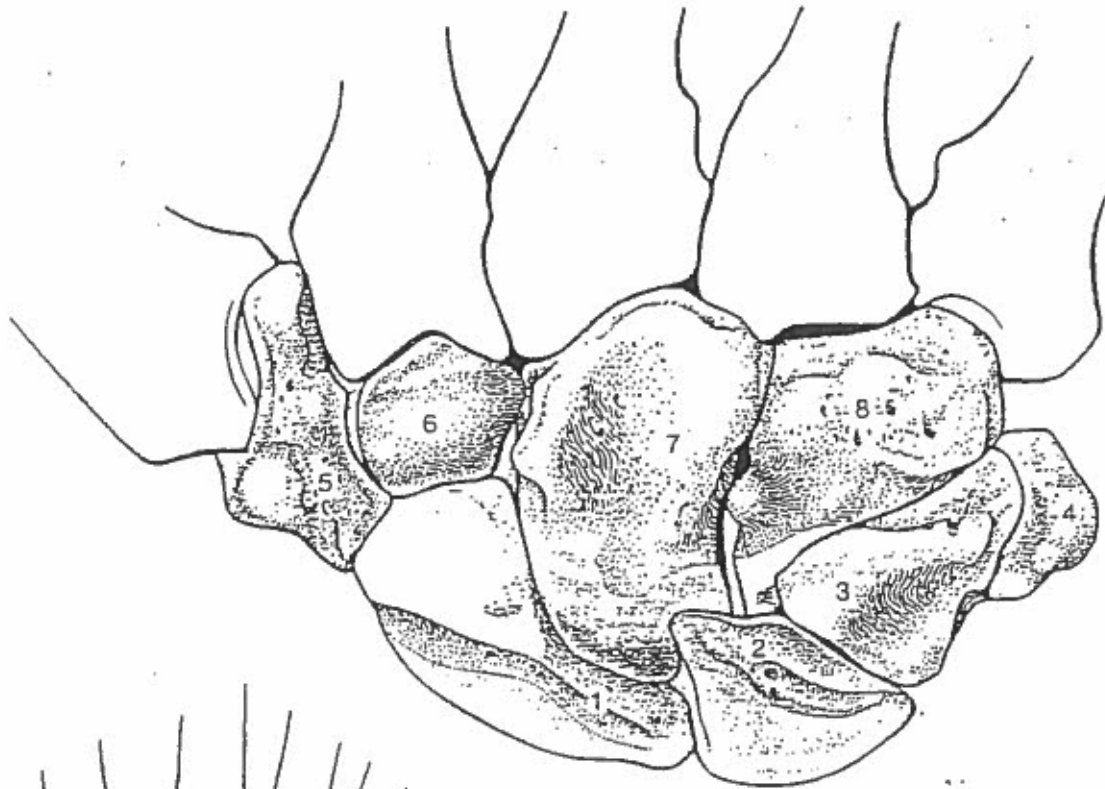
Hand- und Fingerknochen
der rechten Hand von
dorsal

Dr. med. univ.
K. H. KÜNZEL
 Institut für Anatomie, Histologie und Embryologie
 der Universität Innsbruck
 A-6010 Innsbruck, Müllerstraße 59

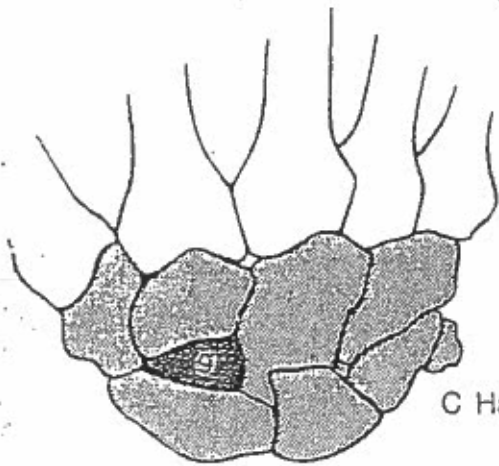


Hand- und Fingerknochen
der rechten Hand von
dorsal

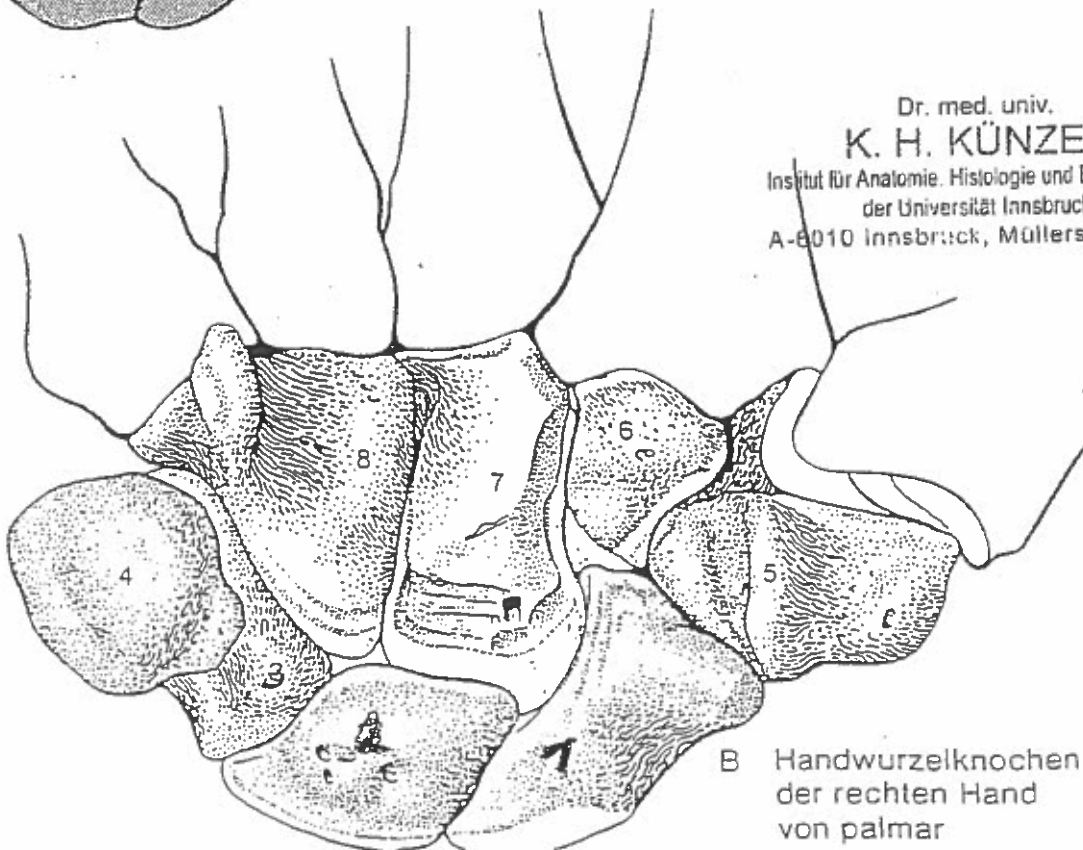
Dr. med. univ.
K. H. KÜNZEL
 Institut für Anatomie, Histologie und Embryologie
 der Universität Innsbruck
 A-6010 Innsbruck, Müllerstraße 59



A Handwurzelknochen der rechten Hand von dorsal

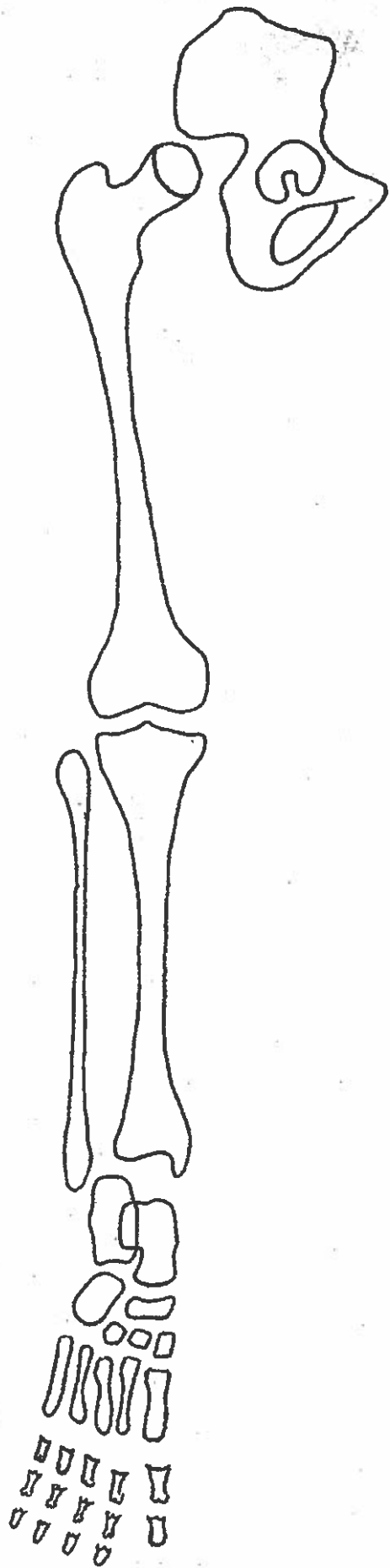


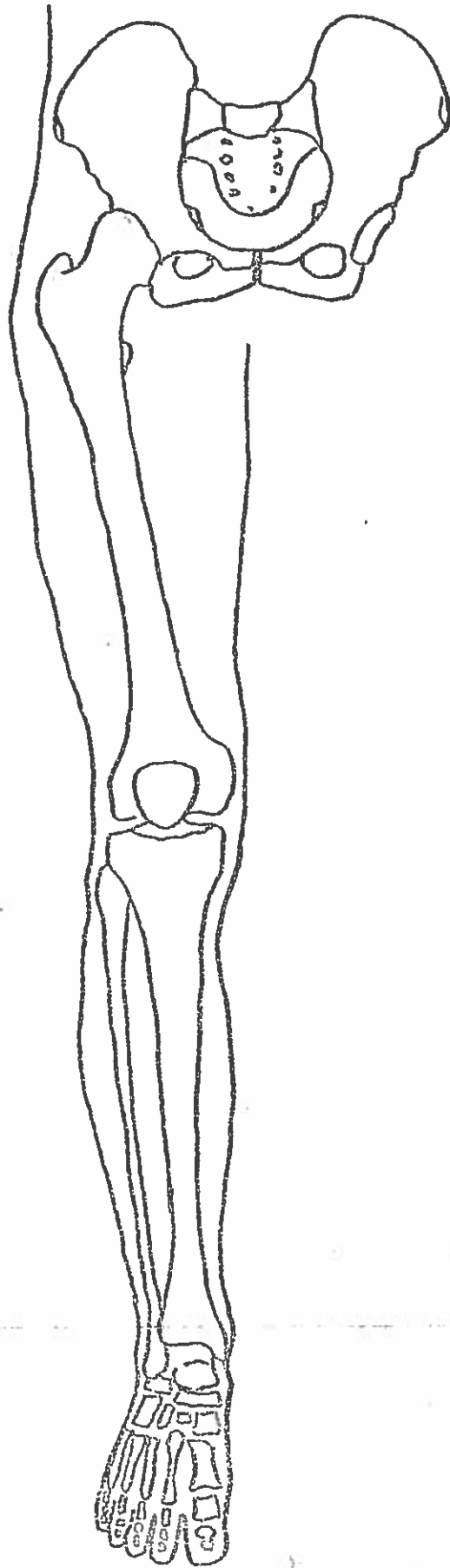
C Handwurzel mit Os centrale von dorsal

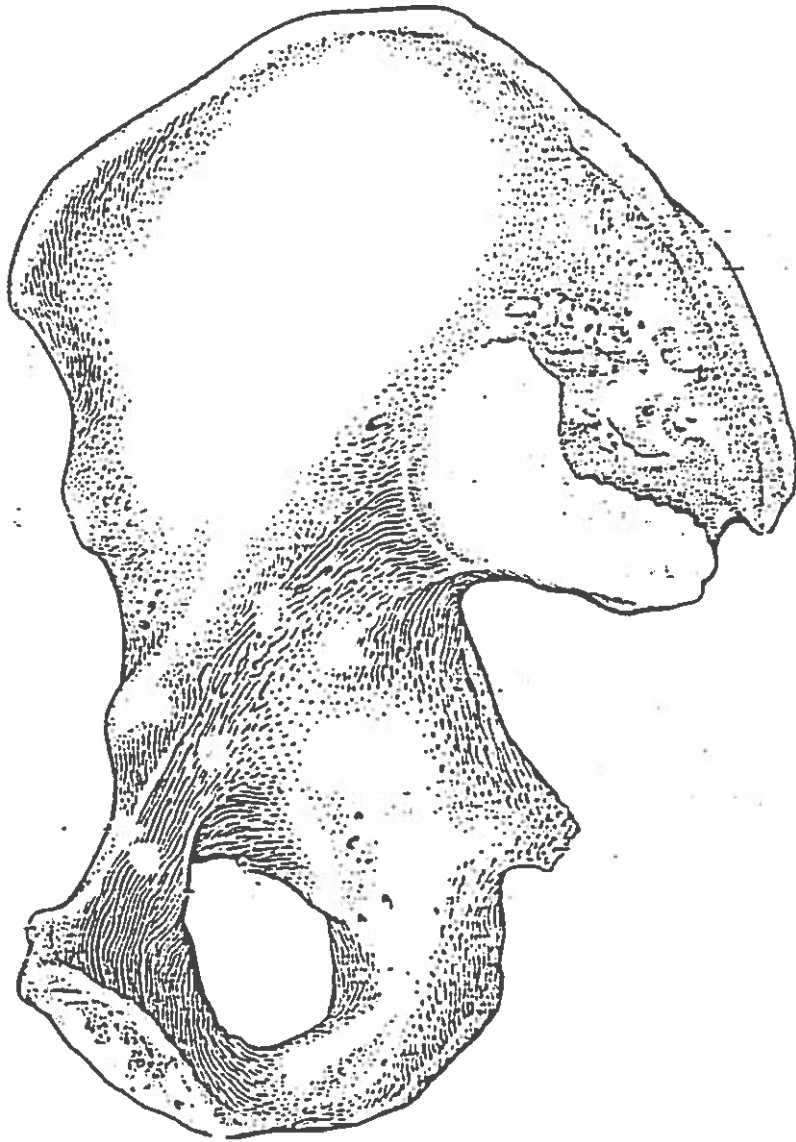


B Handwurzelknochen der rechten Hand von palmar

Dr. med. univ.
K. H. KÜNZEL
Institut für Anatomie, Histologie und Embryologie
der Universität Innsbruck
A-6010 Innsbruck, Müllerstraße 59

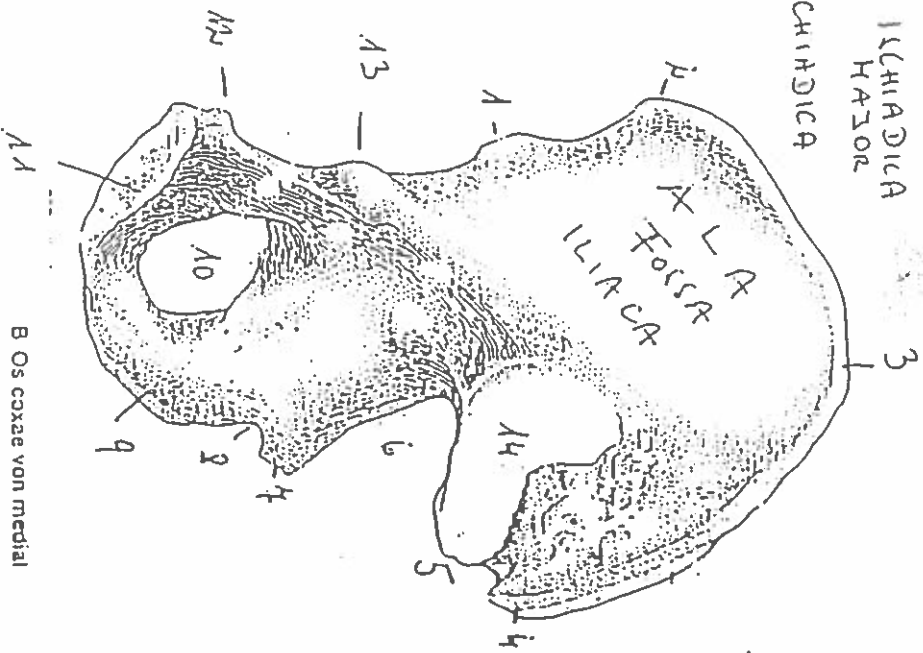






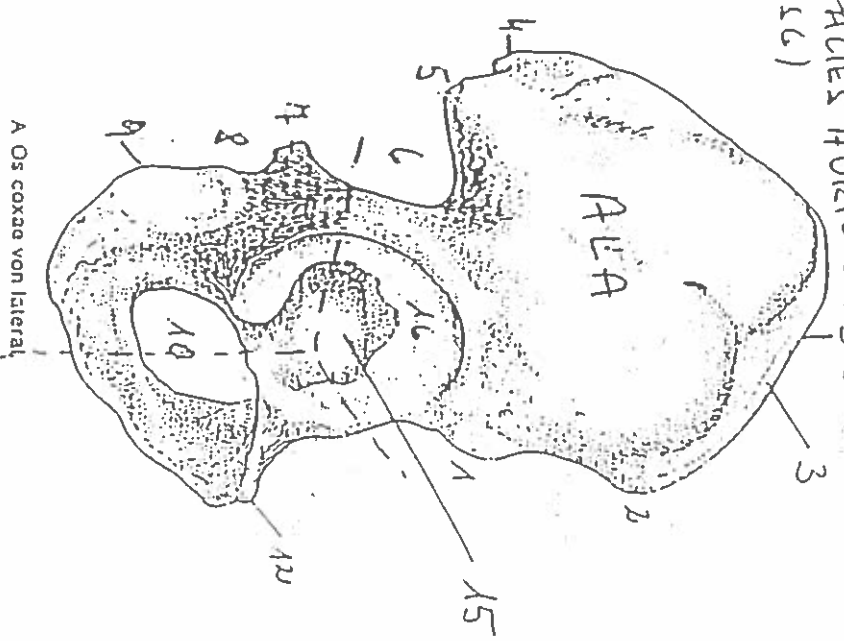
B Os coxae von medial

- 1 SPINA ILIACA ANTERIOR INFERIOR
- 2 " " SUPERIOR
- 3 CRISTA ILIACA
- 4 SPINA ILIACA POSTERIOR SUPERIOR
- 5 " " INFERIOR
- 6 INCISURA ISCHIADICA HASIOR
- 7 SPINA ISCHIADICA



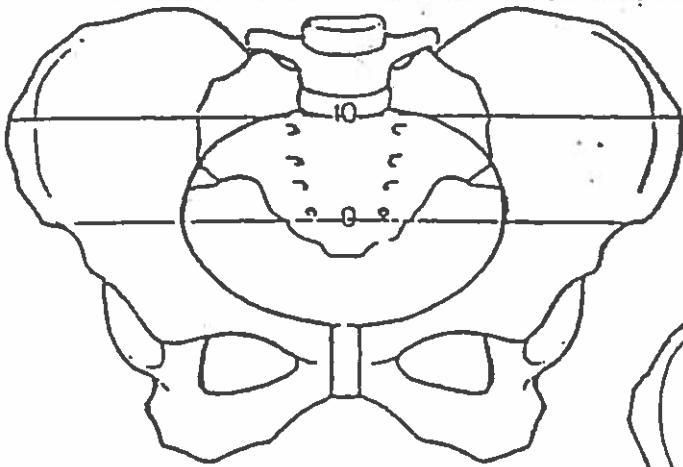
B Os coxae von medial

- 8 INCISURA ISCHIADICA HINOR
- 9 TUBER. ISCHIADICUM
- 10 FORAMEN OSTIUM
- 11 FACIES SYMPHYSEALIS
- 12 TUBERCULUM PUBICUM
- 13 EMINENTIA ILIOPELVICA (ILG)
- 14 FACIES AURICULARIS

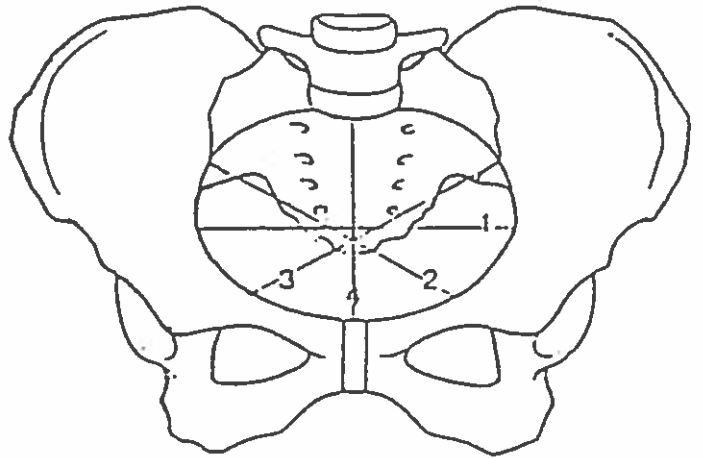


A Os coxae von lateral

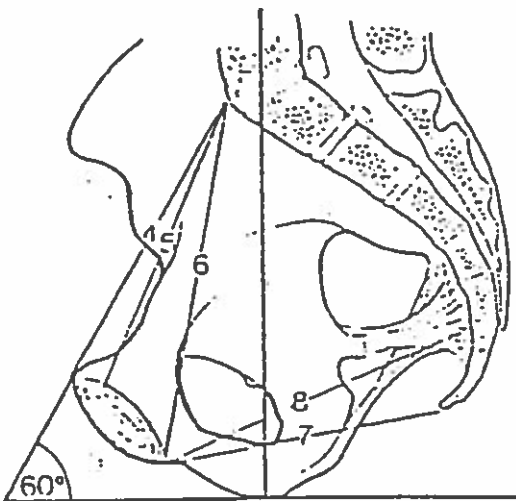
15 ACETABULUM
 16 FACIES LUNATA
 (TAFELNE f. Hüftgelenk)



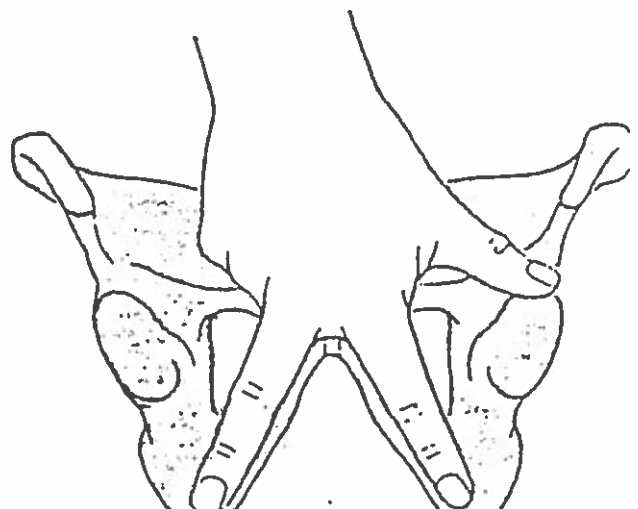
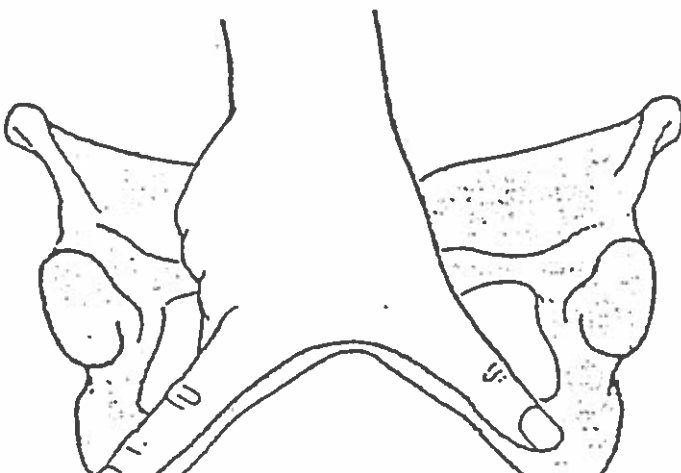
C äußere Beckenmaße

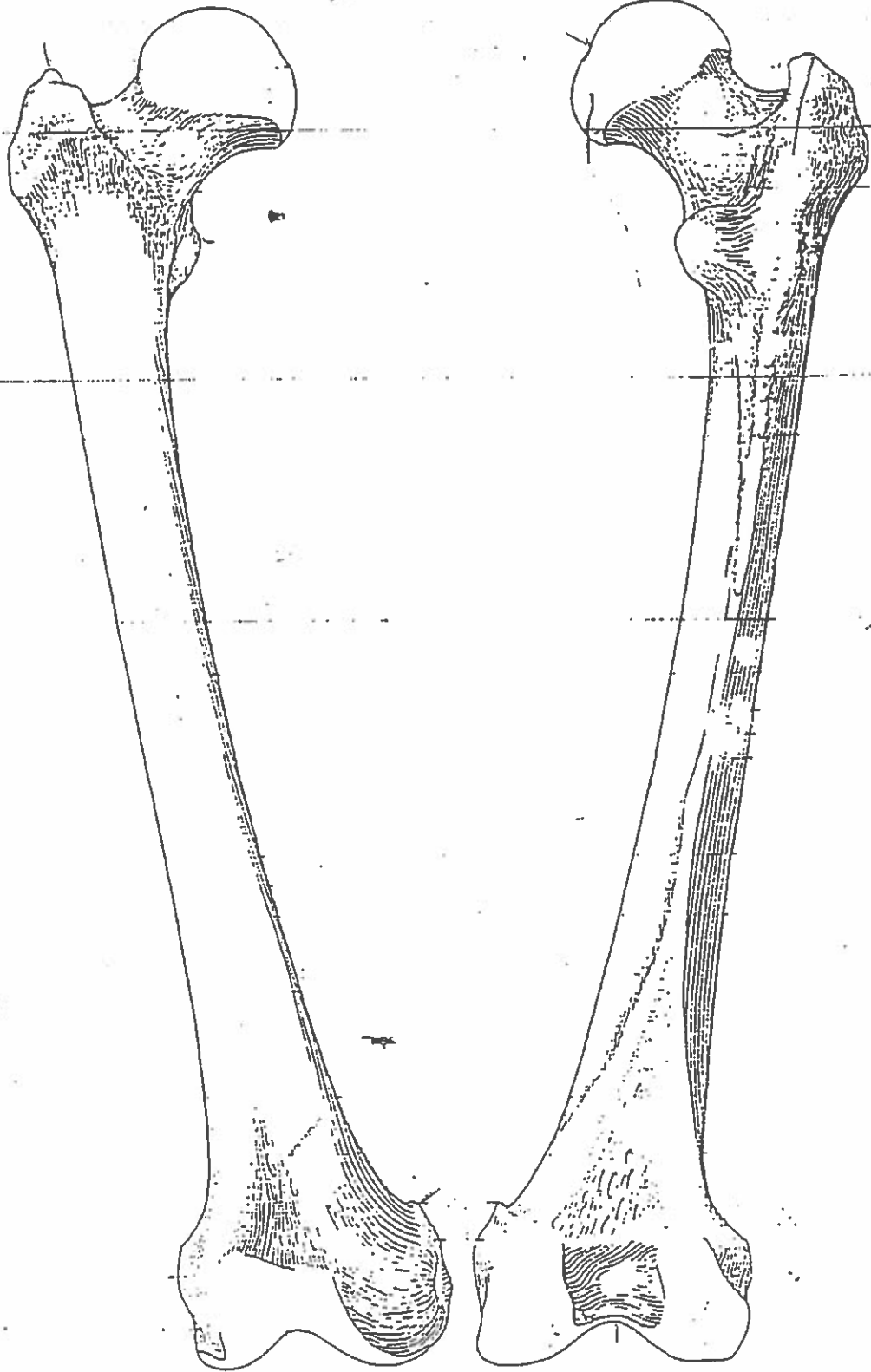


B Beckendurchmesser

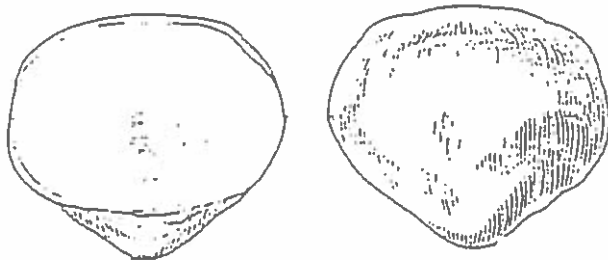


A Beckenneigung



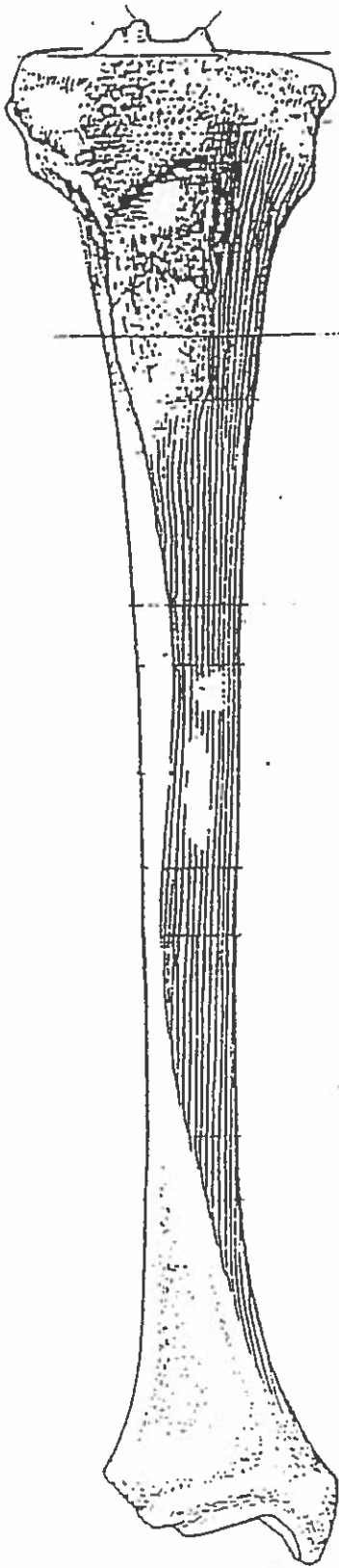


A rechtes Femur von vorne B rechtes Femur von hinten

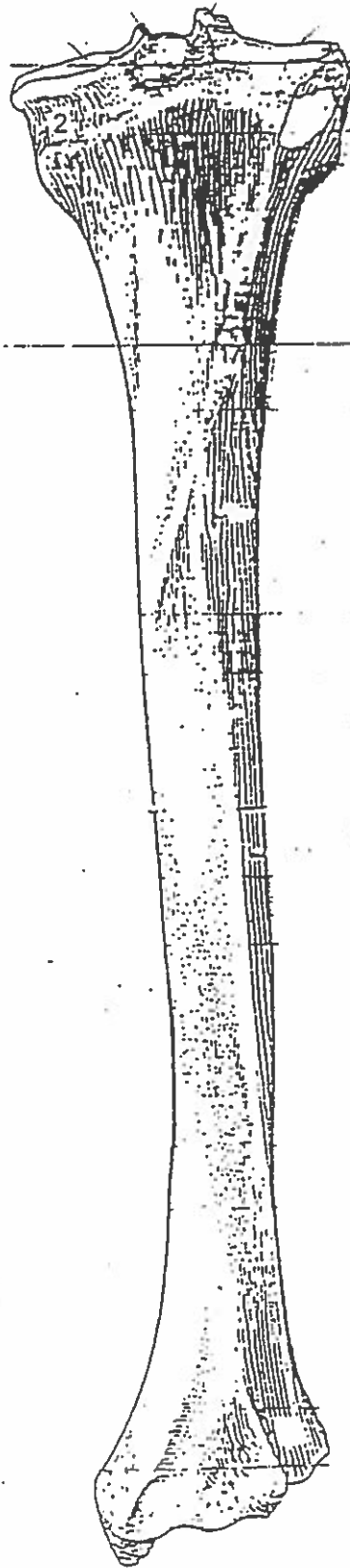


C rechte Patella

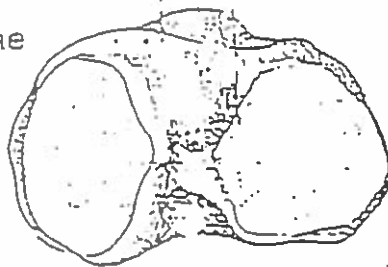
Dr. med. v.
K. H. KÜNZEL
 Institut für Anatomie, Histologie und Embryologie
 der Universität Innsbruck
 A-6010 Innsbruck, Müllnerstraße 59



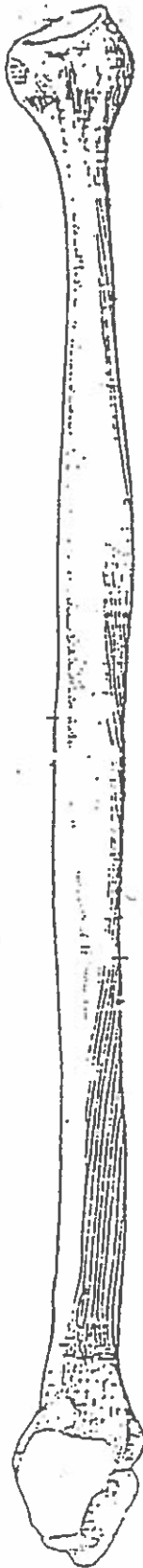
A rechte Tibia von vorne



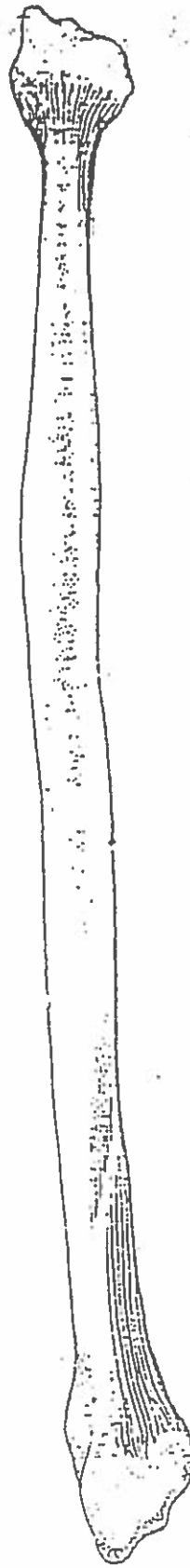
C rechte Tibia von hinten



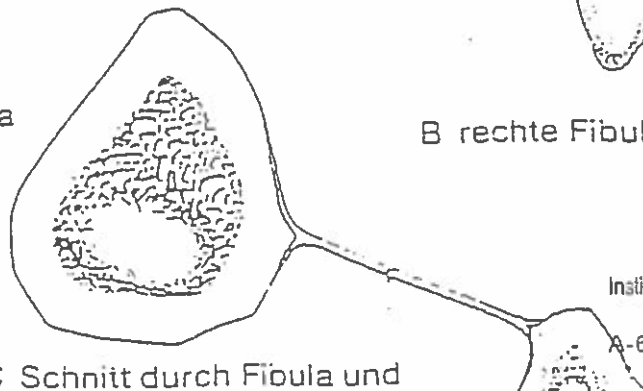
Dr. med. univ.
K. H. KÜNZEL
Institut für Anatomie, Histologie und Embryologie
der Universität Innsbruck
A-6010 Innsbruck, Müllerstraße 59



A rechte Fibula
von medial

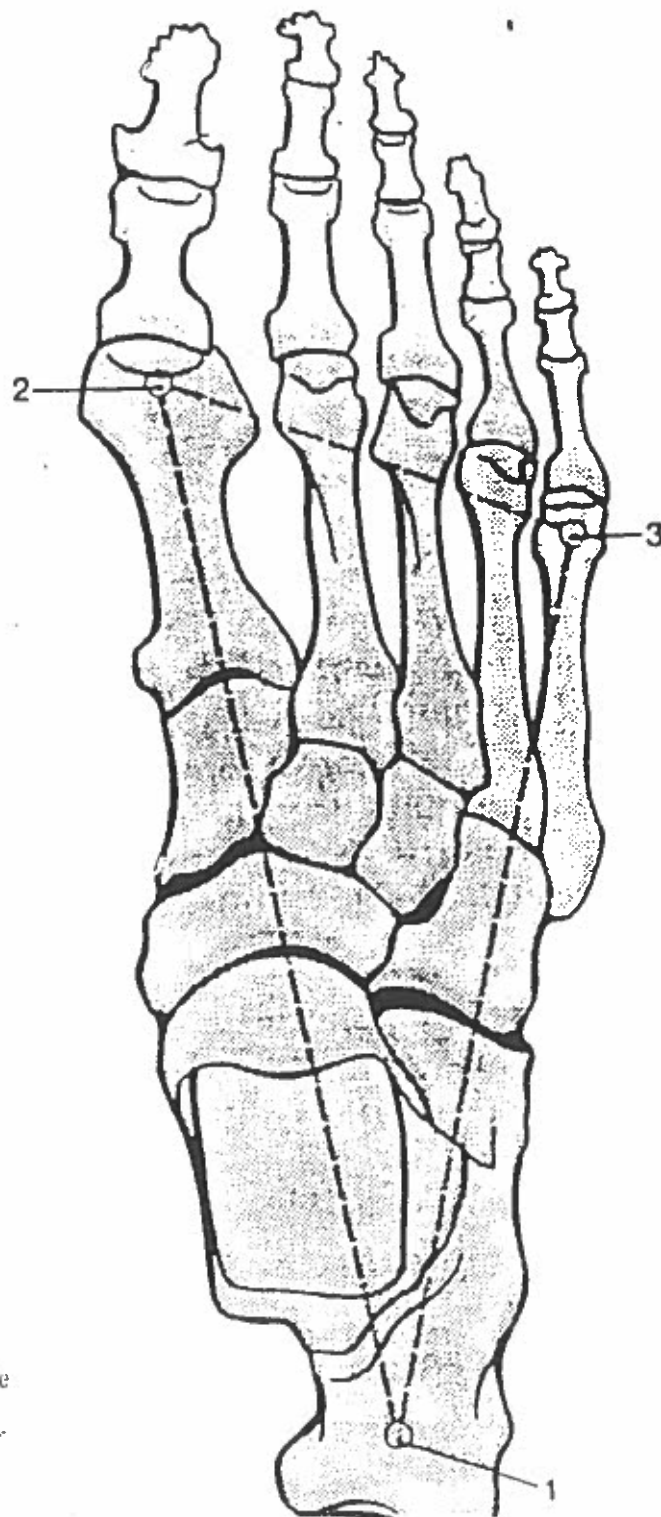


B rechte Fibula von lateral

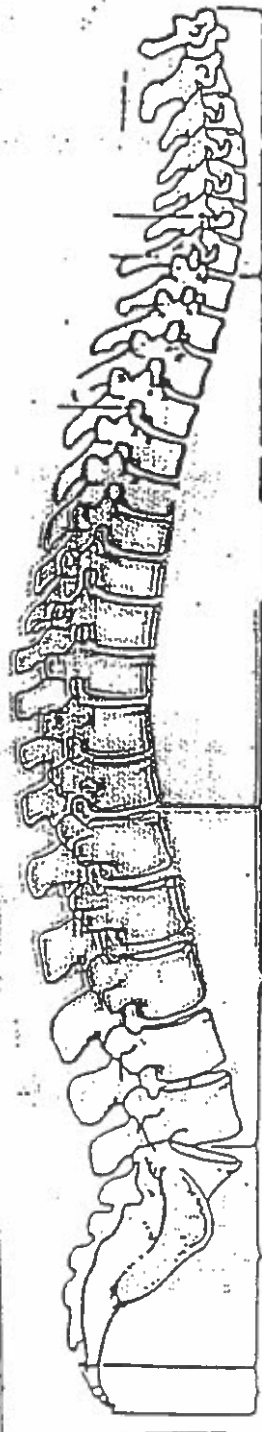


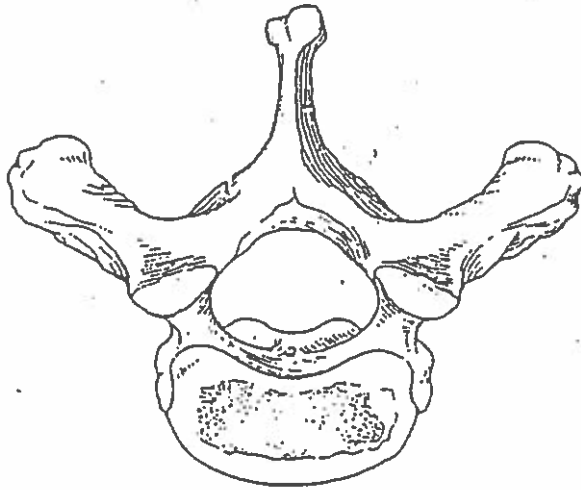
C Schnitt durch Fibula und

Dr. med. univ.
K. H. KÜNZEL
Institut für Anatomie, Histologie und Embryologie
der Universität Innsbruck
A-6010 Innsbruck, Müllerstraße 59

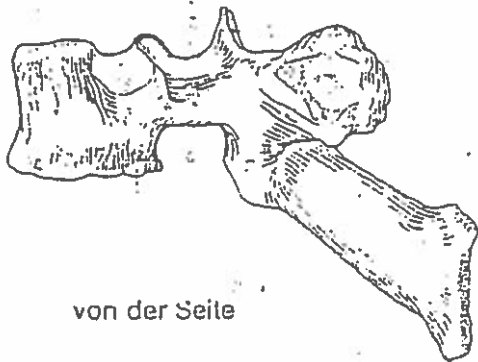


Dr. med. univ.
K. H. KÜNZEL
Institut für Anatomie, Histologie und Embryologie
der Universität Innsbruck
A-6010 Innsbruck, Müllerstraße 57

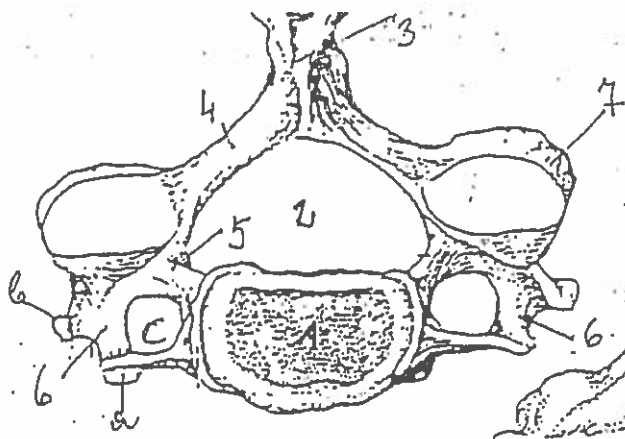




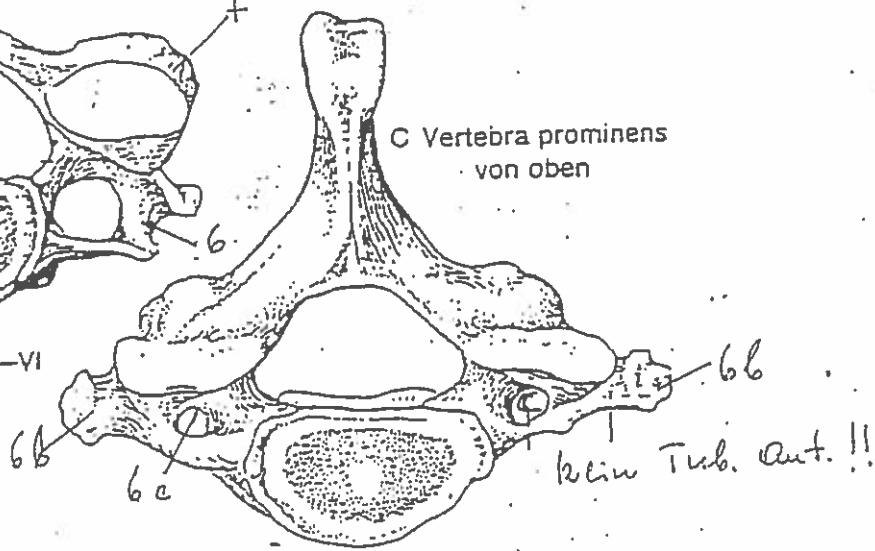
von oben



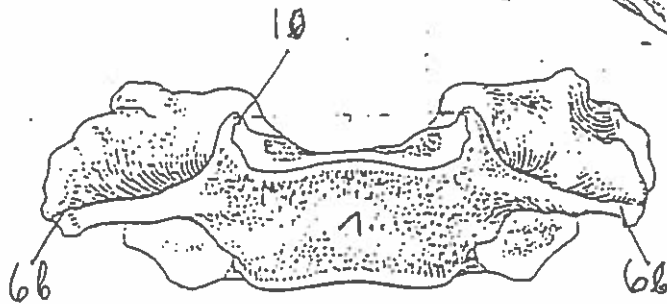
von der Seite



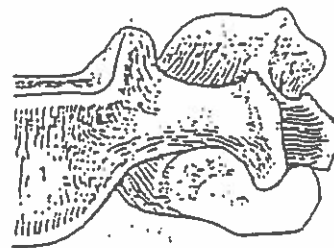
A Vertebra cervicalis III-VI von oben



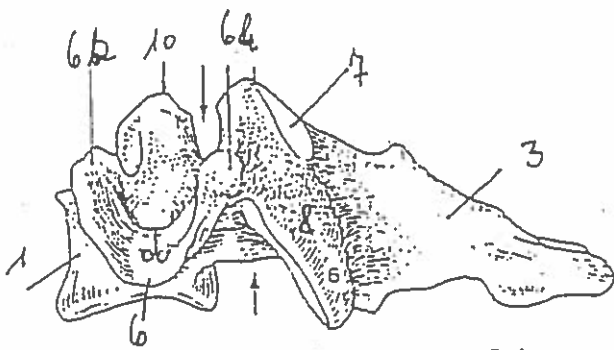
C Vertebra prominens von oben



B Vertebra prominens von vorne



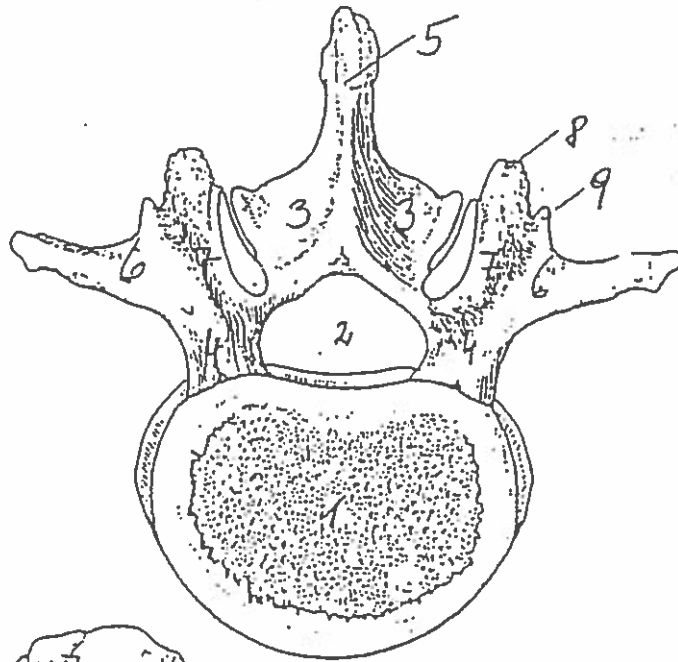
D Vertebra cervicalis VI von vorne (Ausschnitt)



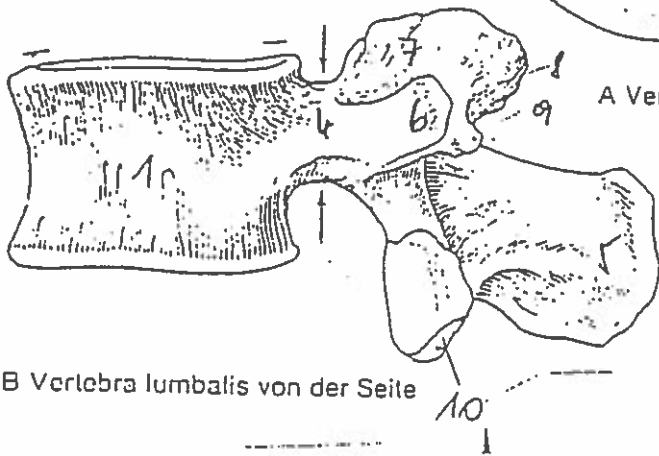
E Vertebra cervicalis von der Seite

- | | |
|--|------------------------------------|
| 1 CORPUS | 7 PROC. ARTIC. SUP. + Gelenkfläche |
| 2 CANALIS VERTEBRALIS | 8 PROC. ARTIC. INF. + Gelenkfläche |
| 3 PROC. SPINOSUS | ↓ INCISURA VERTEBR. SUP. |
| ARCUS | ↑ - - - - - INF. |
| 4 LAMINA | 10 PROCESSUS UNCIATI |
| 5 PEDICULUS | |
| 6 PROCESSUS TRANSVERSUS | |
| 6a TUBERCULUM ANTERIUS | |
| 6b * POSTERIUS | |
| C FORAMEN PROC. TRANSVERSI | |
| 4 = 5 = 6 = 7 = 8 = 9 = 10 = 11 = 12 = 13 = 14 = 15 = 16 = 17 = 18 = 19 = 20 = 21 = 22 = 23 = 24 = 25 = 26 = 27 = 28 = 29 = 30 = 31 = 32 = 33 = 34 = 35 = 36 = 37 = 38 = 39 = 40 = 41 = 42 = 43 = 44 = 45 = 46 = 47 = 48 = 49 = 50 = 51 = 52 = 53 = 54 = 55 = 56 = 57 = 58 = 59 = 60 = 61 = 62 = 63 = 64 = 65 = 66 = 67 = 68 = 69 = 70 = 71 = 72 = 73 = 74 = 75 = 76 = 77 = 78 = 79 = 80 = 81 = 82 = 83 = 84 = 85 = 86 = 87 = 88 = 89 = 90 = 91 = 92 = 93 = 94 = 95 = 96 = 97 = 98 = 99 = 100 = 101 = 102 = 103 = 104 = 105 = 106 = 107 = 108 = 109 = 110 = 111 = 112 = 113 = 114 = 115 = 116 = 117 = 118 = 119 = 120 = 121 = 122 = 123 = 124 = 125 = 126 = 127 = 128 = 129 = 130 = 131 = 132 = 133 = 134 = 135 = 136 = 137 = 138 = 139 = 140 = 141 = 142 = 143 = 144 = 145 = 146 = 147 = 148 = 149 = 150 = 151 = 152 = 153 = 154 = 155 = 156 = 157 = 158 = 159 = 160 = 161 = 162 = 163 = 164 = 165 = 166 = 167 = 168 = 169 = 170 = 171 = 172 = 173 = 174 = 175 = 176 = 177 = 178 = 179 = 180 = 181 = 182 = 183 = 184 = 185 = 186 = 187 = 188 = 189 = 190 = 191 = 192 = 193 = 194 = 195 = 196 = 197 = 198 = 199 = 200 = 201 = 202 = 203 = 204 = 205 = 206 = 207 = 208 = 209 = 210 = 211 = 212 = 213 = 214 = 215 = 216 = 217 = 218 = 219 = 220 = 221 = 222 = 223 = 224 = 225 = 226 = 227 = 228 = 229 = 230 = 231 = 232 = 233 = 234 = 235 = 236 = 237 = 238 = 239 = 240 = 241 = 242 = 243 = 244 = 245 = 246 = 247 = 248 = 249 = 250 = 251 = 252 = 253 = 254 = 255 = 256 = 257 = 258 = 259 = 260 = 261 = 262 = 263 = 264 = 265 = 266 = 267 = 268 = 269 = 270 = 271 = 272 = 273 = 274 = 275 = 276 = 277 = 278 = 279 = 280 = 281 = 282 = 283 = 284 = 285 = 286 = 287 = 288 = 289 = 290 = 291 = 292 = 293 = 294 = 295 = 296 = 297 = 298 = 299 = 300 = 301 = 302 = 303 = 304 = 305 = 306 = 307 = 308 = 309 = 310 = 311 = 312 = 313 = 314 = 315 = 316 = 317 = 318 = 319 = 320 = 321 = 322 = 323 = 324 = 325 = 326 = 327 = 328 = 329 = 330 = 331 = 332 = 333 = 334 = 335 = 336 = 337 = 338 = 339 = 340 = 341 = 342 = 343 = 344 = 345 = 346 = 347 = 348 = 349 = 350 = 351 = 352 = 353 = 354 = 355 = 356 = 357 = 358 = 359 = 360 = 361 = 362 = 363 = 364 = 365 = 366 = 367 = 368 = 369 = 370 = 371 = 372 = 373 = 374 = 375 = 376 = 377 = 378 = 379 = 380 = 381 = 382 = 383 = 384 = 385 = 386 = 387 = 388 = 389 = 390 = 391 = 392 = 393 = 394 = 395 = 396 = 397 = 398 = 399 = 400 = 401 = 402 = 403 = 404 = 405 = 406 = 407 = 408 = 409 = 410 = 411 = 412 = 413 = 414 = 415 = 416 = 417 = 418 = 419 = 420 = 421 = 422 = 423 = 424 = 425 = 426 = 427 = 428 = 429 = 430 = 431 = 432 = 433 = 434 = 435 = 436 = 437 = 438 = 439 = 440 = 441 = 442 = 443 = 444 = 445 = 446 = 447 = 448 = 449 = 450 = 451 = 452 = 453 = 454 = 455 = 456 = 457 = 458 = 459 = 460 = 461 = 462 = 463 = 464 = 465 = 466 = 467 = 468 = 469 = 470 = 471 = 472 = 473 = 474 = 475 = 476 = 477 = 478 = 479 = 480 = 481 = 482 = 483 = 484 = 485 = 486 = 487 = 488 = 489 = 490 = 491 = 492 = 493 = 494 = 495 = 496 = 497 = 498 = 499 = 500 = 501 = 502 = 503 = 504 = 505 = 506 = 507 = 508 = 509 = 510 = 511 = 512 = 513 = 514 = 515 = 516 = 517 = 518 = 519 = 520 = 521 = 522 = 523 = 524 = 525 = 526 = 527 = 528 = 529 = 530 = 531 = 532 = 533 = 534 = 535 = 536 = 537 = 538 = 539 = 540 = 541 = 542 = 543 = 544 = 545 = 546 = 547 = 548 = 549 = 550 = 551 = 552 = 553 = 554 = 555 = 556 = 557 = 558 = 559 = 560 = 561 = 562 = 563 = 564 = 565 = 566 = 567 = 568 = 569 = 570 = 571 = 572 = 573 = 574 = 575 = 576 = 577 = 578 = 579 = 580 = 581 = 582 = 583 = 584 = 585 = 586 = 587 = 588 = 589 = 590 = 591 = 592 = 593 = 594 = 595 = 596 = 597 = 598 = 599 = 600 = 601 = 602 = 603 = 604 = 605 = 606 = 607 = 608 = 609 = 610 = 611 = 612 = 613 = 614 = 615 = 616 = 617 = 618 = 619 = 620 = 621 = 622 = 623 = 624 = 625 = 626 = 627 = 628 = 629 = 630 = 631 = 632 = 633 = 634 = 635 = 636 = 637 = 638 = 639 = 640 = 641 = 642 = 643 = 644 = 645 = 646 = 647 = 648 = 649 = 650 = 651 = 652 = 653 = 654 = 655 = 656 = 657 = 658 = 659 = 660 = 661 = 662 = 663 = 664 = 665 = 666 = 667 = 668 = 669 = 670 = 671 = 672 = 673 = 674 = 675 = 676 = 677 = 678 = 679 = 680 = 681 = 682 = 683 = 684 = 685 = 686 = 687 = 688 = 689 = 690 = 691 = 692 = 693 = 694 = 695 = 696 = 697 = 698 = 699 = 700 = 701 = 702 = 703 = 704 = 705 = 706 = 707 = 708 = 709 = 710 = 711 = 712 = 713 = 714 = 715 = 716 = 717 = 718 = 719 = 720 = 721 = 722 = 723 = 724 = 725 = 726 = 727 = 728 = 729 = 730 = 731 = 732 = 733 = 734 = 735 = 736 = 737 = 738 = 739 = 740 = 741 = 742 = 743 = 744 = 745 = 746 = 747 = 748 = 749 = 750 = 751 = 752 = 753 = 754 = 755 = 756 = 757 = 758 = 759 = 760 = 761 = 762 = 763 = 764 = 765 = 766 = 767 = 768 = 769 = 770 = 771 = 772 = 773 = 774 = 775 = 776 = 777 = 778 = 779 = 780 = 781 = 782 = 783 = 784 = 785 = 786 = 787 = 788 = 789 = 790 = 791 = 792 = 793 = 794 = 795 = 796 = 797 = 798 = 799 = 800 = 801 = 802 = 803 = 804 = 805 = 806 = 807 = 808 = 809 = 810 = 811 = 812 = 813 = 814 = 815 = 816 = 817 = 818 = 819 = 820 = 821 = 822 = 823 = 824 = 825 = 826 = 827 = 828 = 829 = 830 = 831 = 832 = 833 = 834 = 835 = 836 = 837 = 838 = 839 = 840 = 841 = 842 = 843 = 844 = 845 = 846 = 847 = 848 = 849 = 850 = 851 = 852 = 853 = 854 = 855 = 856 = 857 = 858 = 859 = 860 = 861 = 862 = 863 = 864 = 865 = 866 = 867 = 868 = 869 = 870 = 871 = 872 = 873 = 874 = 875 = 876 = 877 = 878 = 879 = 880 = 881 = 882 = 883 = 884 = 885 = 886 = 887 = 888 = 889 = 890 = 891 = 892 = 893 = 894 = 895 = 896 = 897 = 898 = 899 = 900 = 901 = 902 = 903 = 904 = 905 = 906 = 907 = 908 = 909 = 910 = 911 = 912 = 913 = 914 = 915 = 916 = 917 = 918 = 919 = 920 = 921 = 922 = 923 = 924 = 925 = 926 = 927 = 928 = 929 = 930 = 931 = 932 = 933 = 934 = 935 = 936 = 937 = 938 = 939 = 940 = 941 = 942 = 943 = 944 = 945 = 946 = 947 = 948 = 949 = 950 = 951 = 952 = 953 = 954 = 955 = 956 = 957 = 958 = 959 = 960 = 961 = 962 = 963 = 964 = 965 = 966 = 967 = 968 = 969 = 970 = 971 = 972 = 973 = 974 = 975 = 976 = 977 = 978 = 979 = 980 = 981 = 982 = 983 = 984 = 985 = 986 = 987 = 988 = 989 = 990 = 991 = 992 = 993 = 994 = 995 = 996 = 997 = 998 = 999 = 1000 | |

LW



A Vertebra lumbalis von oben

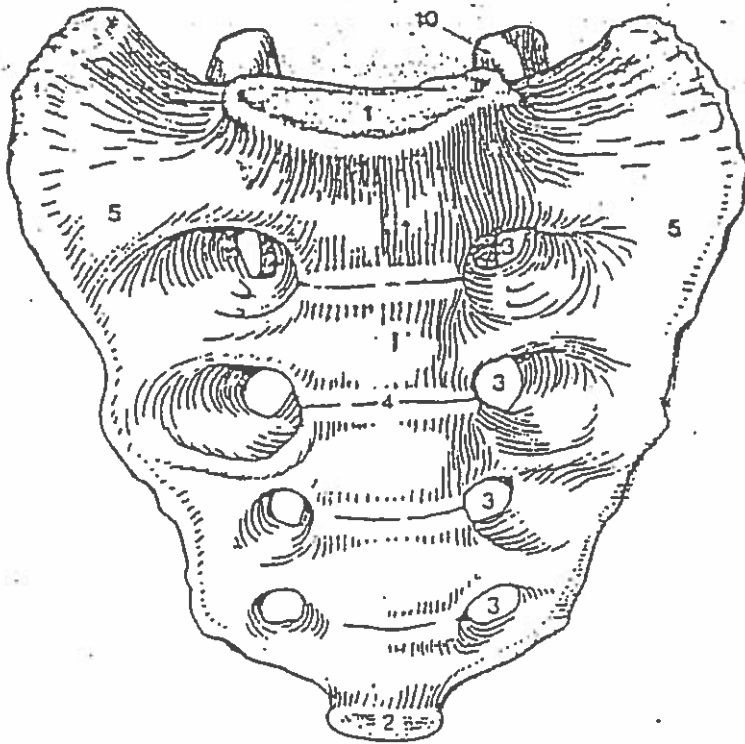


B Vertebra lumbalis von der Seite

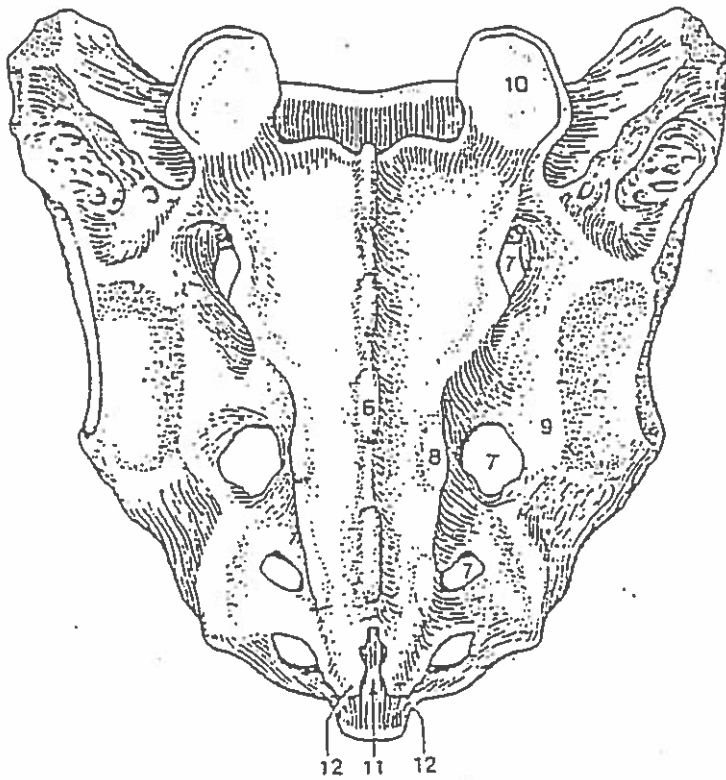
Dr. med. univ.
K. H. KÜNZEL
 Institut für Anatomie, Histologie und Embryologie
 der Universität Innsbruck
 A-6010 Innsbruck, Mütterstraße 59

I
 10 u

ARTIC. INT. T. lumbalis.

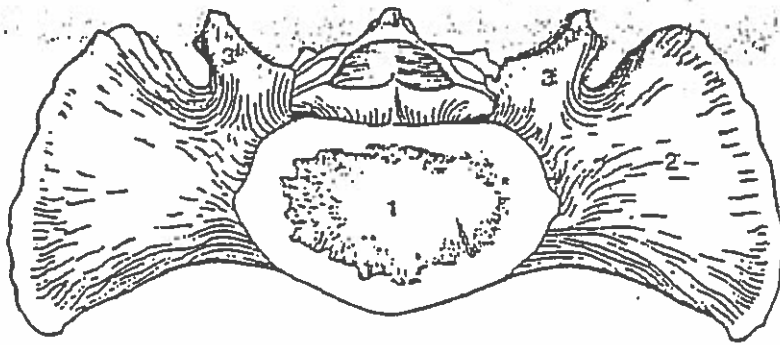


A Os sacrum von vorne

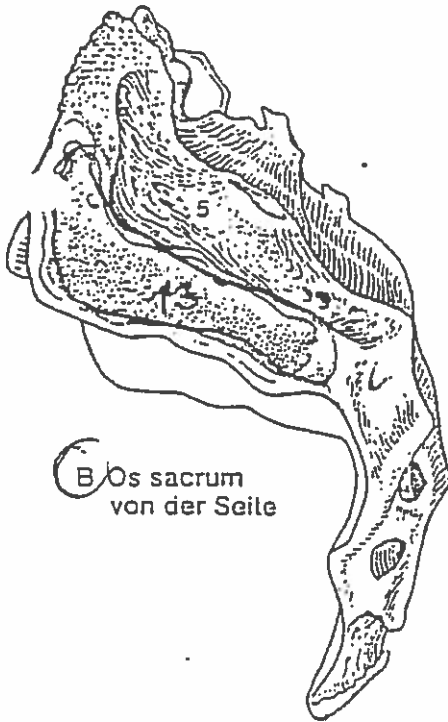


B Os sacrum von hinten

Dr. med. univ.
K. H. KÜNZEL
 Institut für Anatomie, Histologie und Embryologie
 der Universität Innsbruck
 A-6010 Innsbruck, Möllerstraße 59



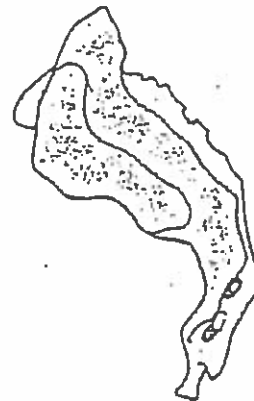
A Os sacrum von oben



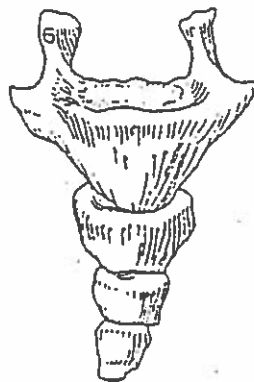
B Os sacrum von der Seite



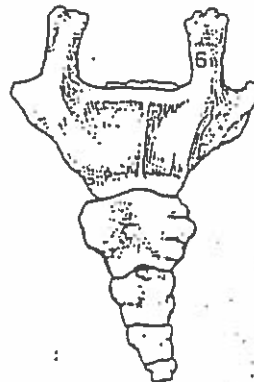
C Os sacrum der Frau von der Seite



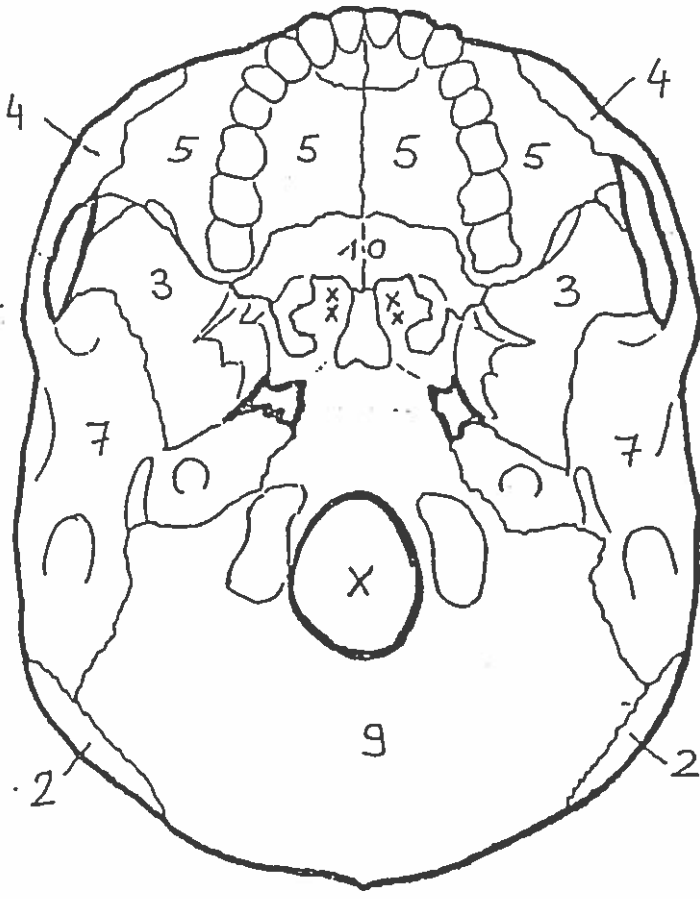
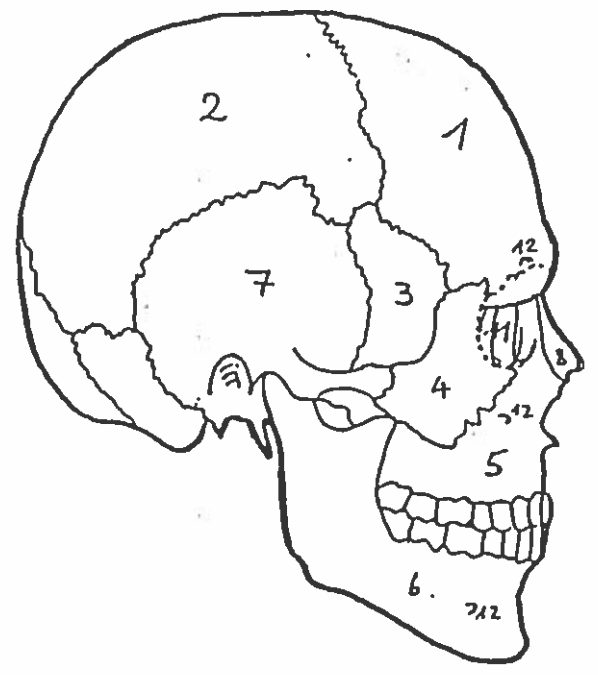
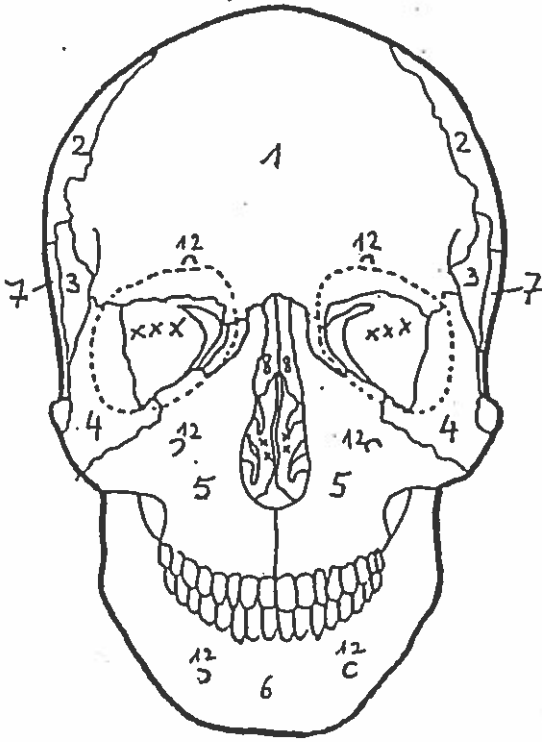
D Os sacrum des Mannes von der Seite



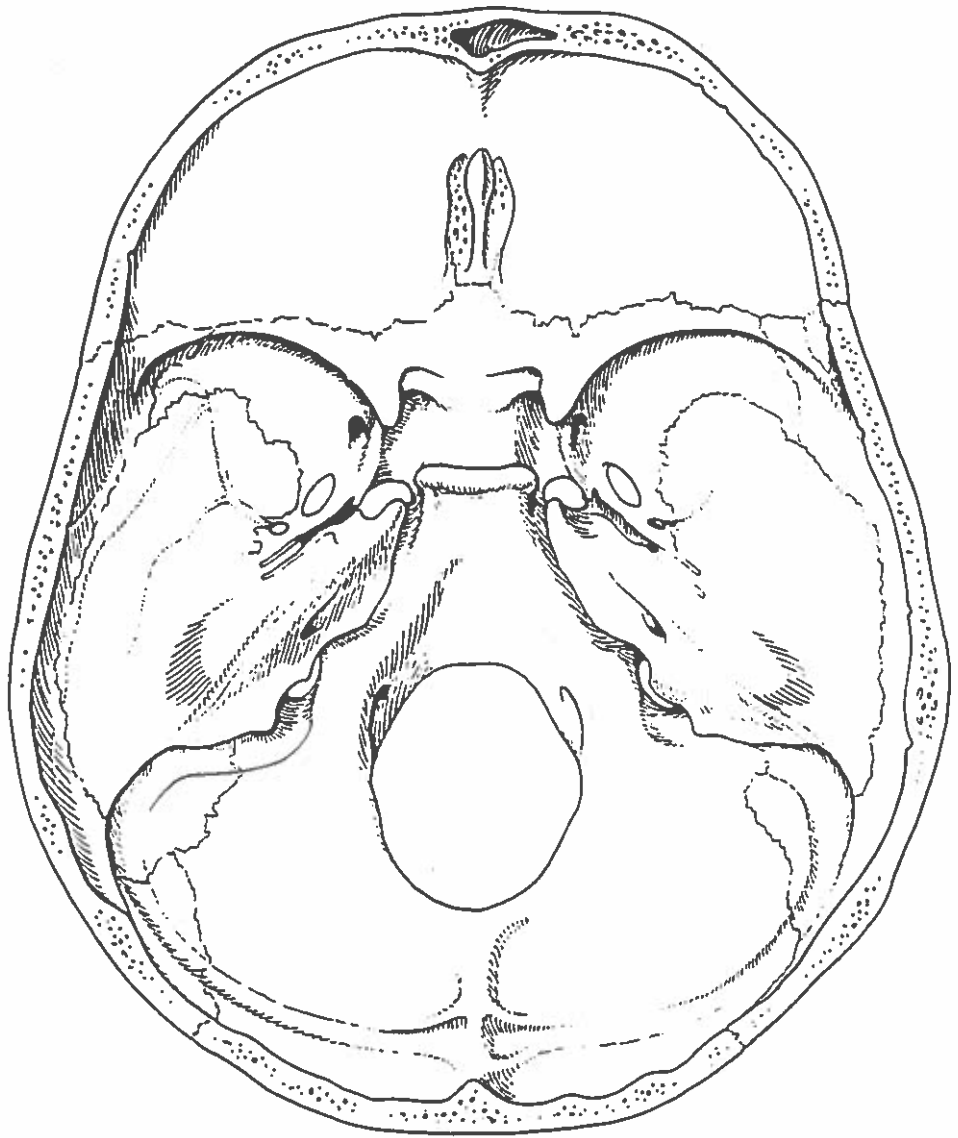
E Os coccygis von vorne

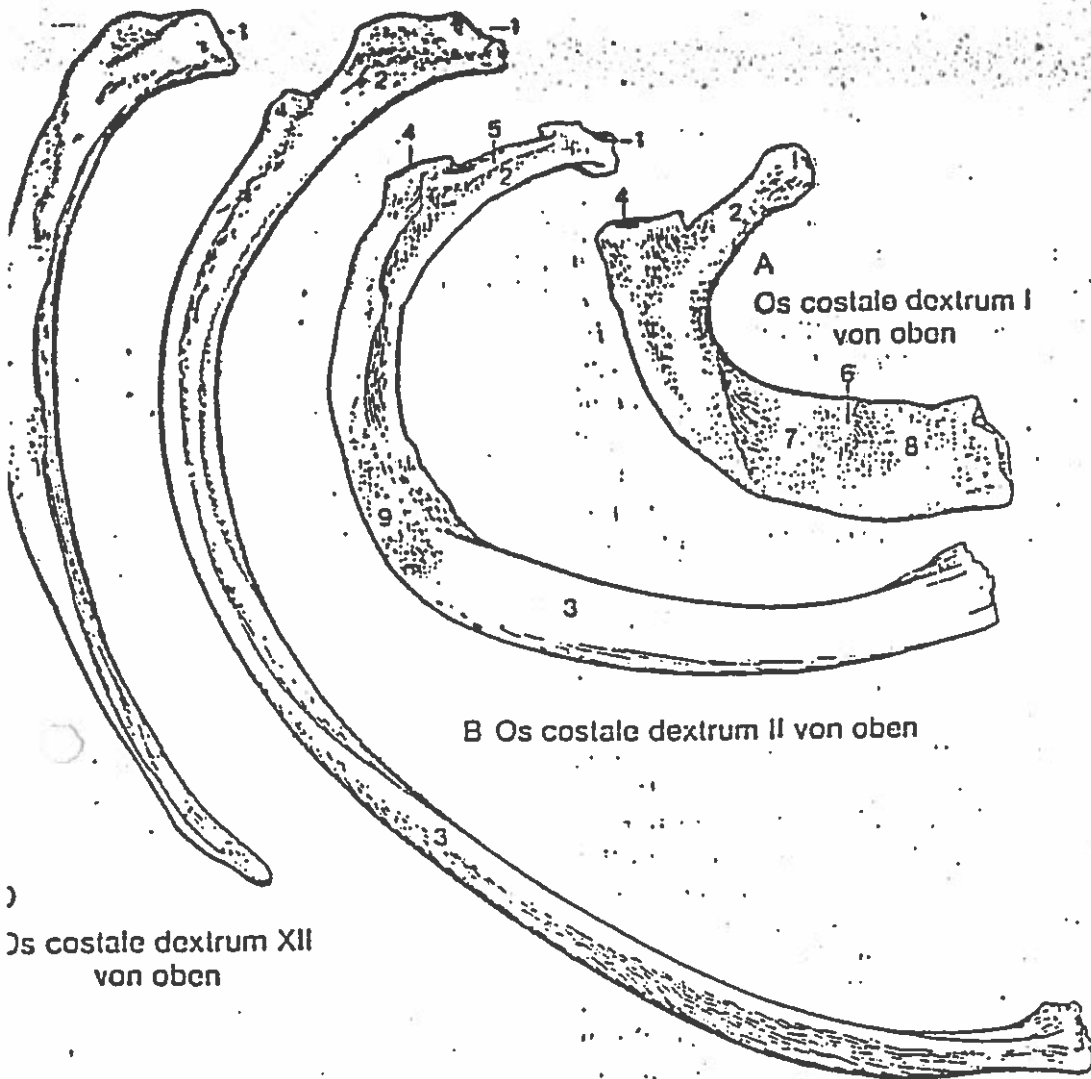


F Os coccygis von hinten



- 1 Stirnbein
- 2 Scheitelbein
- 3 Keilbein
- 4 Jochbein
- 5 Oberkiefer
- 6 Unterkiefer
- 7 Schläfenbein
- 8 Nasenbein
- 9 Hinterhauptsbein
- 10 Gaumenbein
- 11 Tränenbein
- 12 Nervenaustrittsstellen
- x Großes Hinterhauptsloch
- xx Nasenhöhle
- xxx Augenhöhle



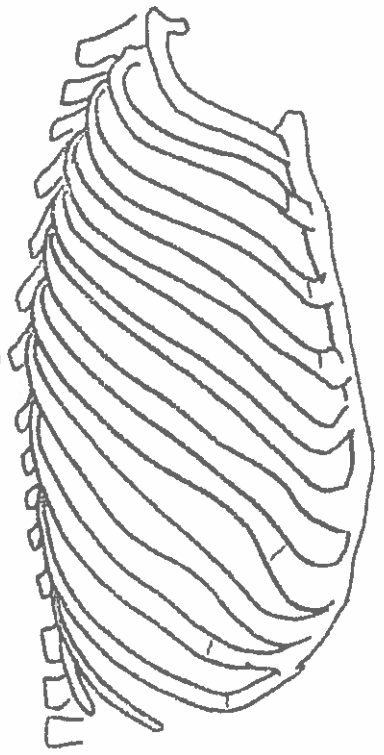
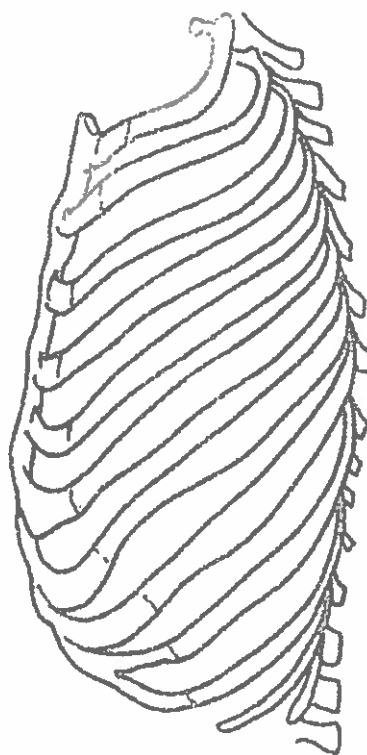
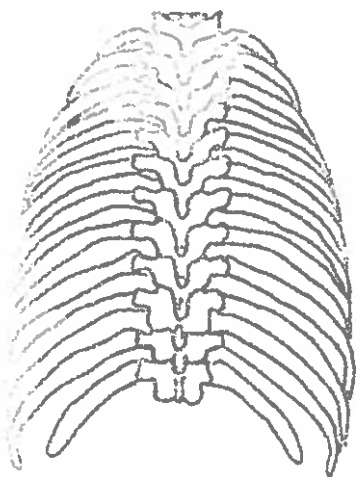
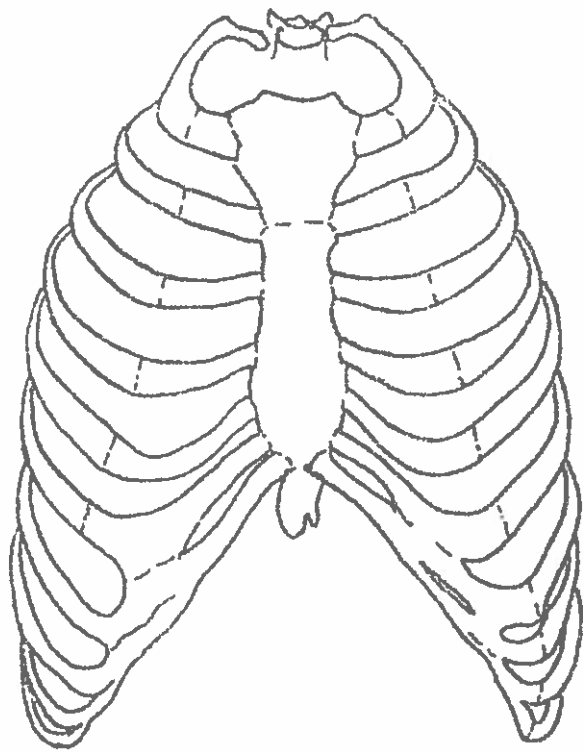


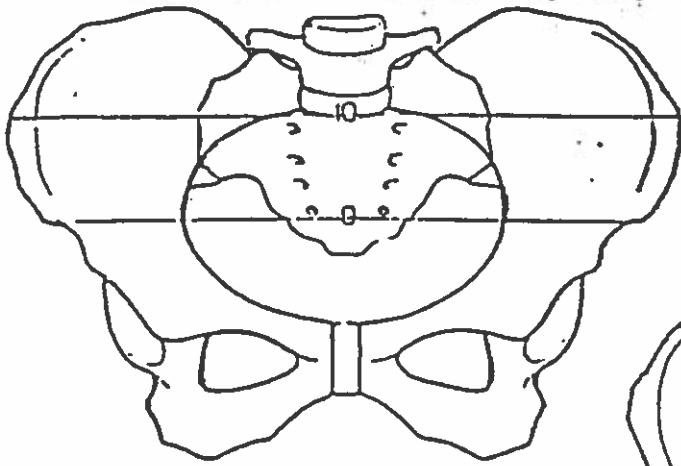
A
Os costale dextrum I
von oben

B Os costale dextrum II von oben

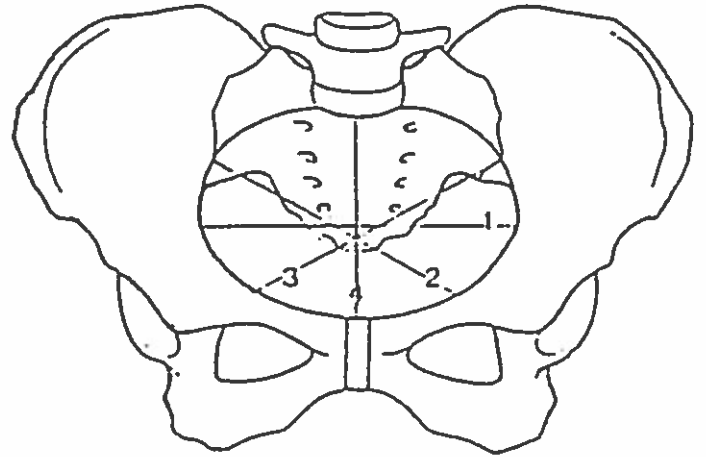
C
Os costale dextrum XII
von oben

C
Os costale dextrum VII von oben

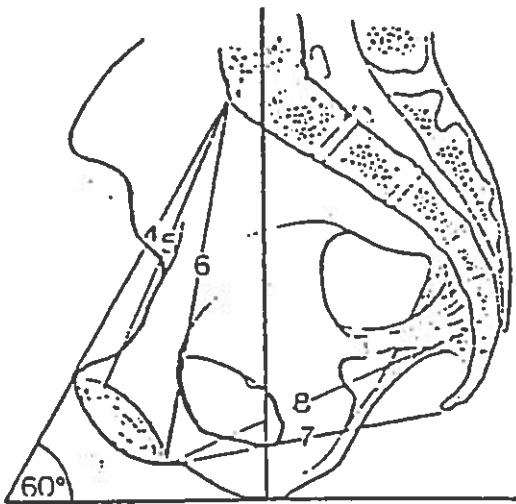




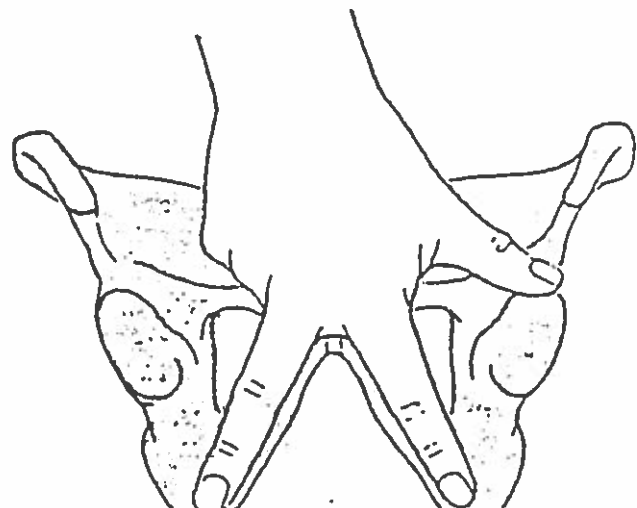
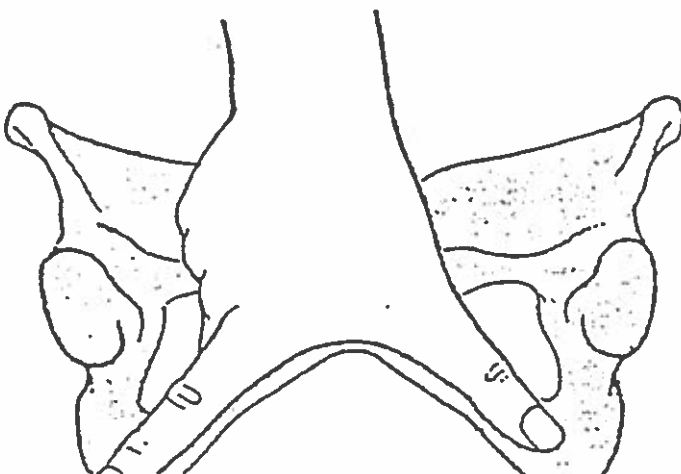
C äußere Beckenmaße



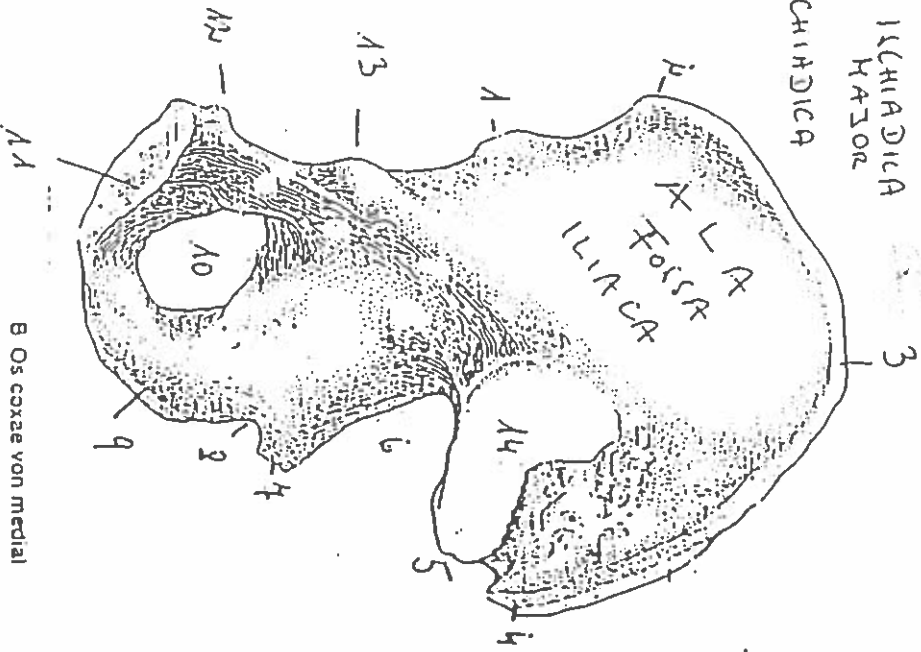
B Beckendurchmesser



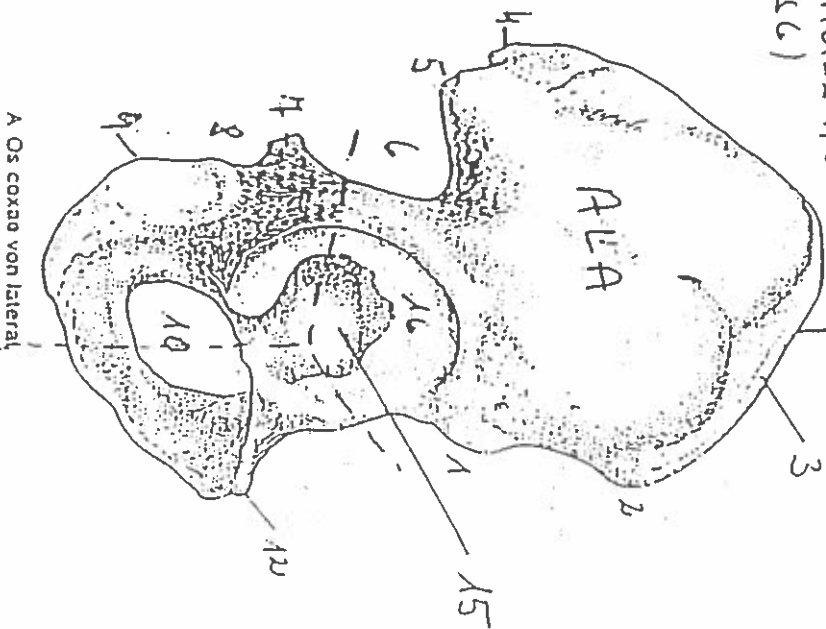
A Beckenneigung



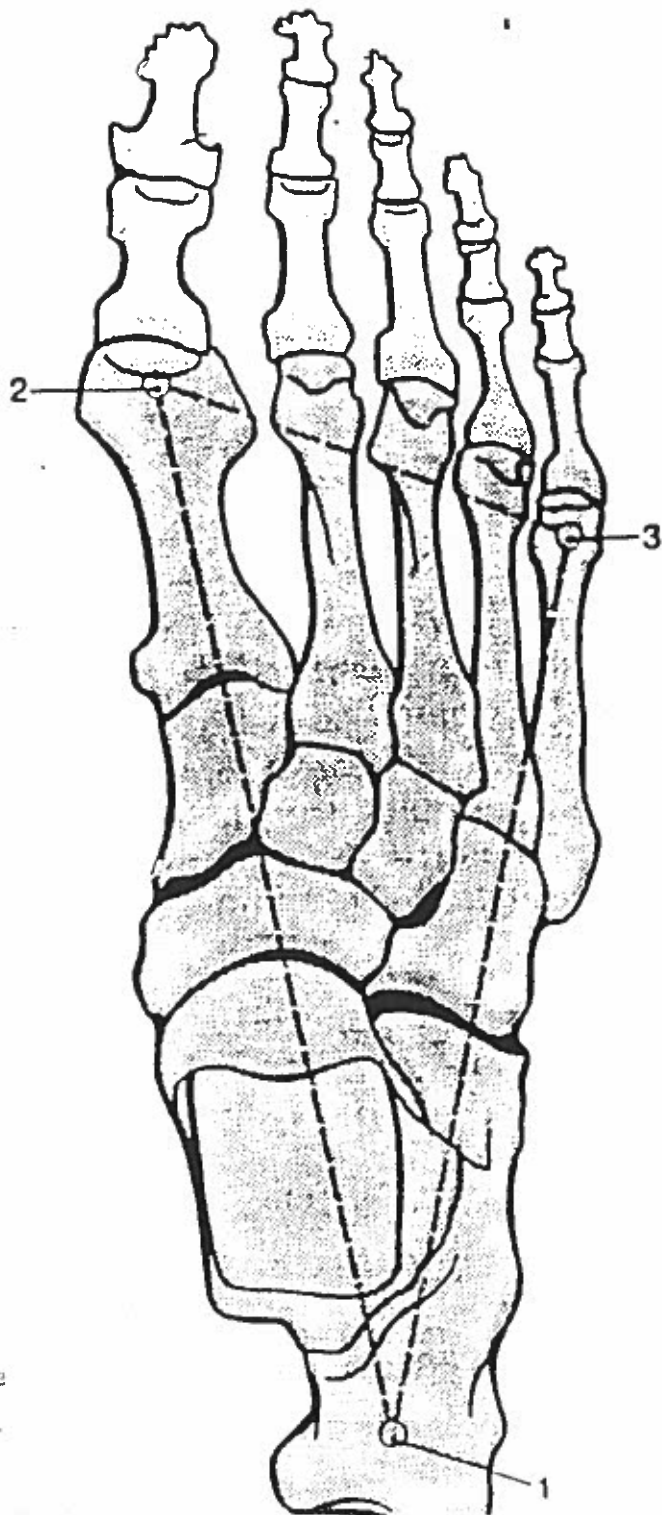
- 1 SPINA ILIACA ANTERIOR INFERIOR
- 2 CRISTA ILIACA
- 3 SPINA ILIACA POSTERIOR SUPERIOR
- 4 SPINA ILIACA POSTERIOR INFERIOR
- 5 INCISURA ICHHIADICA
- 6 SPINA ISCHIADICA



- 8 INCISURA ICHHIADICA HINDR
- 9 TUBER ICHHIADICUM
- 10 FORAMEN OSTURATUM
- 11 FACIES SYMPHYSEALIS
- 12 TUBERCULUM PUBICUM
- 13 EMINENTIA ILIO PUBICA
- 14 FACIES AURICULARIS (ISG)



15 ACETABULUM
16 FACIES LUNATA
(TAFELNE f. Hüftgelenk)



Dr. med. univ.
K. H. KÜNZEL
Institut für Anatomie, Histologie und Embryologie
der Universität Innsbruck
A-6010 Innsbruck, Müllerstraße 54